



TIME GROUP INC.
BEIJING TIME TECHNOLOGIES CO.,LTD.



WeChat code

TIME

WELDING MACHINE

TIME Welder
Famous Brand of China



ISO9001 Quality System Certificated

ISO14001 Environmental Management System Certificated

OHSAS18001 Occupational Health and Safety Management System Certificated

CHINA CCC Certificated

CHINA Energy Conservation Product Certificated

Company Profile

BEIJING TIME TECHNOLOGIES CO., LTD.

Beijing TIME Technologies Co., Ltd was established in 2001. It was a new company initiated by TIME Group with cooperation with Tsinghua unisplendour, Lenovo Group, Daheng Group, Stone Group and other companies, mainly engaged in development, production and sale of the inverter welder, large welding equipments, welding machine for special purpose, CNC cutting machines and arc welding robots. On March 31, 2006, Beijing TIME Technologies Co., Ltd was listed on the Shenzhen Stock Exchange through agency share transfer system, which is the first listed company among the welder manufacturing industry in China. On October 26, 2006, Beijing Time initiated Third Market financing for implementation of target placement, providing better opportunities and conditions for rapid development of the company.

TIME Group Inc. adheres to the key principle "Technology, Industry and export are the lifeblood of TIME Group Inc." the State Secretary. Through development for many years, the company has formed a set of strict management system for technological development, products manufacturing, quality control, financial operation, marketing and customer service. At present, our welding machines passed the national "3C" certification and named "Beijing Famous Brand" for four consecutive years. In 1995, we passed the ISO9001 quality system certification. In 2008, we passed Environmental Management System (ISO14001:2004) and Occupational Health and Safety Management System (OHSMS18001:2001) certification. Therefore TIME Group Inc. becomes the first corporation in welder manufacturing industry in China who had passed the certification of above management systems. Among the welder enterprises in China, TIME Group Inc. is the only one who established the mobile postdoctoral center. There are more than 40 sale and service subsidiaries, sales and service network all over the country.

TIME Group Inc. started development, production and sales of IGBT inverter welder in 1993. Now all our produces are IGBT inverter welders. Adhere to the product development objective of "Domestic first-class, advanced in the world, seeking the first instead of the only" and along the development route of constantly digital, green, automation and innovative, TIME Group Inc. provides high-quality perfect welders to the society. Currently the IGBT inverter welders of TIME Group Inc. ranks for the first of domestic total sales. TIME Group Inc. has become the largest inverter welder R&D, manufacturing and sales enterprises for many years. There are over ten series and more than 70 kinds of welding machines. In 2003, TIME Group Inc. adopted digital DSP technology in the field of domestic welders, occupying the commanding heights of domestic welding technology. In October 2007, we formed the Jinan Time New ERA Technology Co., Ltd, which is now a wholly owned subsidiary of TIME Group Inc., mainly engaged in the development, production and sales of large welding equipment, special welders, CNC cutting machine. The large welding equipment of TIME Group Inc. has been widely used in wind power, boilers, pressure vessels and other industries. In 2013, our third generation TD series digital welders were pushed to the market by batch, occupying the commanding heights of the domestic digital welders.

In 2009, we invested several hundred million RMB in Jinan Hi-tech Development Zone for hundreds of acres of land for construction of the world's most advanced welder manufacturing base with annual output of 300,000 units. The base was officially put into production in 2013. After continuous exploration and research, the TIME welding robots went debut in 2010 Essen Welding Show, which got the market and user's attention at once. With years of experience in manufacturing of welders and auxiliary machinery, the reliability, integration capabilities of our robots and spare parts supply can be effectively guaranteed. TIME welder robots are perfect combination of sophisticated welding skills and efficient automation. In the same year, we promoted the development of civil welder market, introducing a full line of light and durable small welders, which reinforces TIME brand position in the field of civilian welder, broadening the application of TIME products.

Under the quality policy of "outstanding high-tech products, high quality, customer satisfaction," our welders provide a guarantee in electricity, water, shipbuilding, metallurgy, chemical industry, bridges, oil and gas, installation and many other construction industry, and were widely used in the "Three Gorges Project", "South-to-North Water Diversion", "Olympic Venue Construction" and other key projects. Benefiting from high technology and competition compared with similar foreign products, our welder have been exported to over 40 countries such as Russia, Netherlands, Australia, Thailand, Malaysia, Brazil, South Africa, Israel, India and so on since 2003.



Overview

Technology, Industry and Export are the lifeblood of TIME Group Inc.



Self Design Cooperation Creativity

TIME milestone

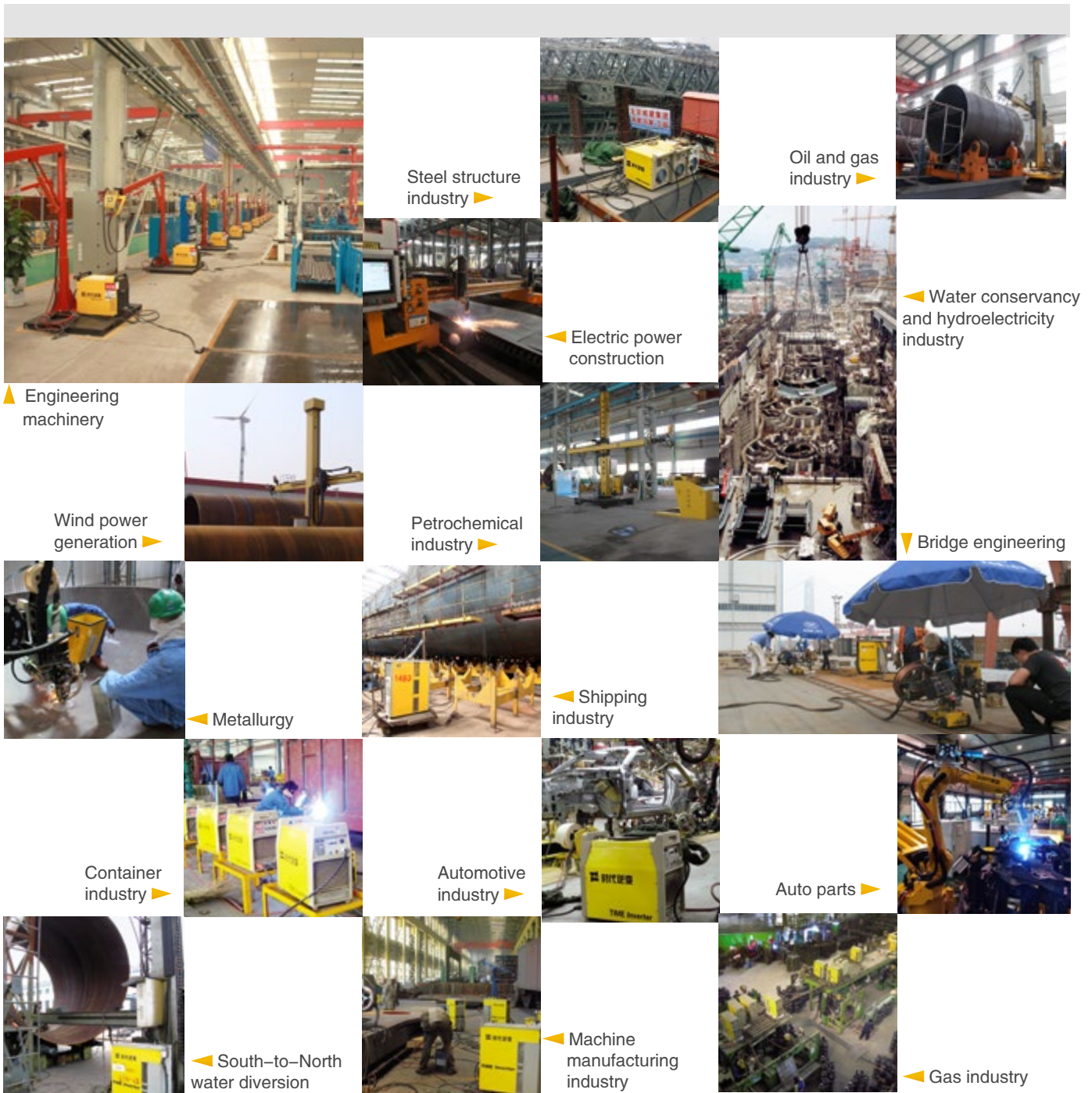
of development



- 2019 ● All digital DSP inverter welding machine are recognized by the industry, and opened up a new situation in the application of intelligent robot and Internet of things
- 2017 ● Double pulse gas shielded welding machine enter the key industries in batches.
- 2015 ● Intelligent plant initially completed.
- 2013 ● New series of whole digital welding machine has been put into the market. TIME welding-industry park with yearly production capacity of 300,000pcs operated in 2013.
- 2010 ● TIME Robot Showed at Essen Show 2010
- 2008 ● Passed the certificates of environment management system (ISO 14001: 2004) and Occupation Health Safety Management System (OHSMS 18001: 2001). Jinan Time welding industry park started.
- 2007 ● TIME welding process laboratory was founded, which can provide users with full welding technologies plan. The company set up Jinan TIME New ERA Technology Co.,Ltd. mainly engaging into the development, production, manufactory of large automatic welding and cutting equipment.
- 2006 ● Beijing TIME Technologies Co.,Ltd was listed on the Shenzhen Stock Exchange and successful with directional collection.
- 2002 ● TIME launched large CNC cutting machine and automatic welding center equipment into the market. The welder with Time DSP full digital control technologies increased the technologies of the Time welder.
- 2001 ● TIME Group took the initiative and founded Beijing TIME Technologies Co.,Ltd combining with Tsinghua unisplendour, Lenovo Group, Daheng Group, Stone Group etc.
- 1995 ● TIME became the first one passing ISO9001 quality system certificate, among China manufacturers of welding machine.
- 1993 ● TIME started development, production and sales of IGBT inverter welder.

Our client

After more than thirty years development, TIME's equipments have been widely used in power, water conservancy, shipbuilding, metallurgy, chemical industry, bridge, oil and gas, installation and other industries. We have clients all over the world, and TIME products play important roles in many giant projects.



Qualification



ISO 9001



ZX7-400



WS-400



NB-500



ISO 14001



TDN series



TDN series



MZ-1000



OHSAS 18001



MZ-1000



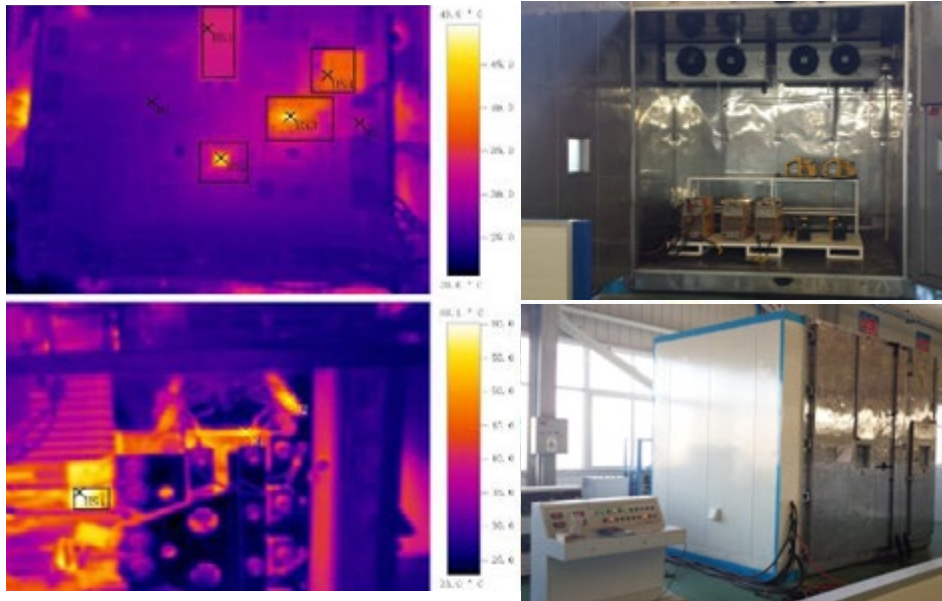
TDL series



TDL series

Quality testing

High temperature Test



EMC Test



Raining Test



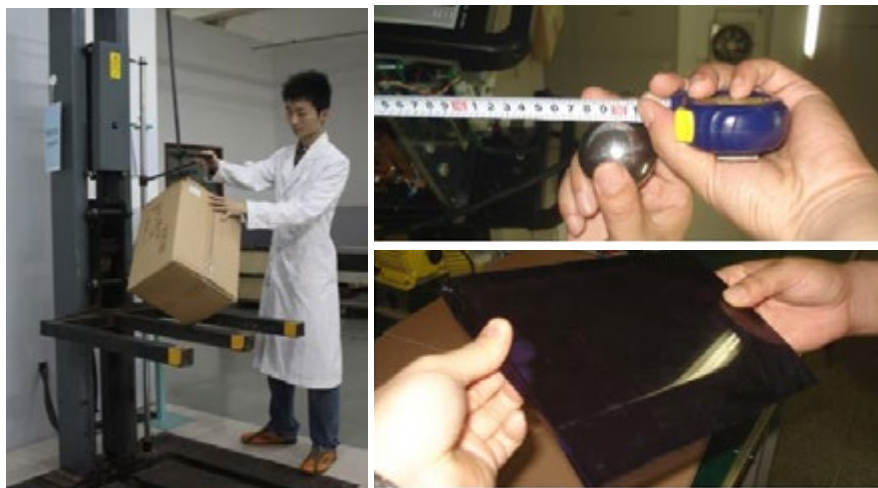
Dust Test



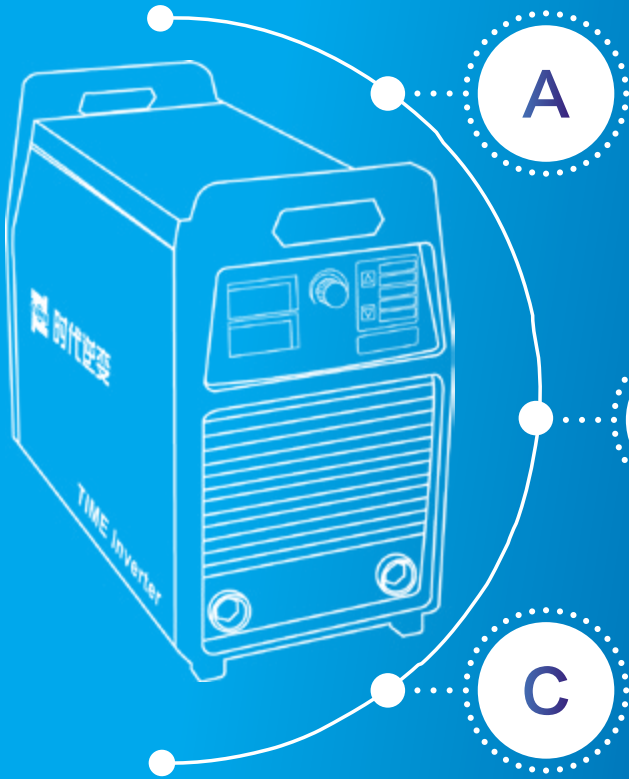
Tension Test



Impact Test



PRODUCT CONTENTS



A

Welding Power Source

Industrial Welding Machine	01
Commercial Welding Machine	27
Digital Intelligent Welding Machine	32

B

Auto Welding and CNC Cutting Equipment

44

C

TIME Arc Welding Robot System

53



Sheet of Available Metal Materials

Product type	Carbon steel	Stainless steel	Aluminum and alloy	Magnesium and alloy	Copper and alloy	Cast iron
Manual DC Arc Welding Machine	★	★	★	★	★	★
DC TIG/MMA Welding Machine	★	★			★	★
AC/DC Pulse TIG/ MMA Square Wave Welding Machine	★	★	★	★	★	★
DC Pulse-TIG/ MMA Welding Machine	★	★			★	★
Semi-automatic Gas Shielded (CO ₂ /MIG/MAG) Welding Machine	★	★	★		★	★
Semi-automatic Gas Shielded (CO ₂ /PMIG/PMAG) Welding Machine	★	★	★	★	★	★
Air Plasma Arc Cutting Machine	★	★	★	★		
Automatic Submerged Arc Welding Machine	★	★	★		★	
Welding Equipment	★	★	★	★	★	★
Longitudinal Seam Welding Machine	★	★	★	★	★	★
CNC Cutting Machine	★	★	★	★		

Unique Multi-Voltage Technology

- TIME's welding machine can be used in different countries with different input power.
- Almost welding machines are with input power: 3 phase 380V.
- The welding machines with input power 3 phase 220V, 3 phase 415V, 3 phase 440V even 3 phase 460 can be customized.

The welding machines with different input power are listed below to choose.

1.The welding machines with input power single phase 220V/240V

Model	Company type	Power input	Welding mode	Details in page
TAZ2100A		single phase 240V	MMA	Page 28
TAZ2105A		single phase 240V	MMA	Page 28
WSM-200	PNE20-200P	single phase 220V	TIG Pulse/MMA	Page 10

2.The welding machines with input power 3 phase 220V

Model	Company type	Power input	Welding mode	Details in page
ZX7-400	PE60-400	3 phase 220V	MMA	Page 3
ZX7-400	PE60-400E	3 phase 220V	MMA	Page 3
ZX7-400	PE60-400F	3 phase 220V	MMA	Page 3
WS-400	PNE60-400E	3 phase 220V	TIG	Page 7
NB-500	A160-500B/BT	3 phase 220V	MIG/MAG	Page 16
MZ-1000	A310-1000	3 phase 220V	SAW	Page 24

3.The welding machines with input power (Multi-voltage)

Model	Company type	Power input	Welding mode	Details in page
TAZ 1600A		single phase 220V/110V	MMA	Page 28
TAZ 1605A		single phase 240V/120V	MMA	Page 28
TDN 5000K		3 phase 220V/440V	MIG/MAG	Page 36
WSM-400	PNE 61-400P	3 phase 380V/440V	Pulse TIG	Page 11



TIME

WELDING MACHINE

Industrial Welding Machine

Features:

- Most mature competitive industrial inverter welding machine with 25 years experience
- Welding performance is recognized by experts
- Soft switch technology, international energy-saving products with "energy star" title

Application:

- Heavy industry such as steel structure, coal, shipbuilding, machinery manufacturing etc.
- On-site construction industries like Petrochemical, hydropower, thermal power and so on
- Preferred brand for vocational colleges

Specialized Industrial welder

TIME

WELDING MACHINE

Manual DC Arc Welding Machine

Suitable for Welding: carbon steel, stainless steel, cast iron, copper, titanium and other metals

Air carbon arc gouging available

Main features

IGBT inverter technology

Arc ignition with high success rate

Scratch TIG

Wide range of power supply

Stable arc, molten pool is easy to control

Small spatter, electrode non-stick

Arc force current adjustable to ensure the best performance

Arc current adjustable to ensure the best performance

Many kinds of electrodes such as acid, basic, heat resistant steel and so on can be used

Digital display meter, welding current can be preset accurately before welding

Table of welding machine model and the electrode diameter

Model	Electrode diameter (recommend)
ZX7-400	φ 3.2~ φ 5.0
ZX7-500	φ 5.0~ φ 6.0
ZX7-630	φ 5.0~ φ 6.0

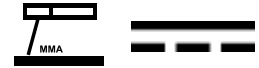
Remote controller

Type of remote controller	Welding machine suitable
H028	PE60-400
RC-6	PE61-400

Selection Tip

ZX7-400 (PE60-400)	Over 200m long welding cable can be used	ZX7-630 (PE60-630S)	MMA and air carbon arc gouging
ZX7-400 (PE60-400E)	Cellulose welding	ZX7-630 (PE52-630)	Special for air carbon arc gouging
ZX7-400 (PE60-400F)	Suitable to use with generator	6/4 × ZX7-400/500	Save space
ZX7-500 (PE60-500S)	Over 200 m long welding cable can be used	ZX7-3 × 400/500	Suitable for narrow space
ZX7-500 (PE50-500)	Excellent performance of carbon arc air gouging		
ZX7-500 (PE60-500S)	Over 200m long welding cable can be used		

Manual DC Arc Welding Machine



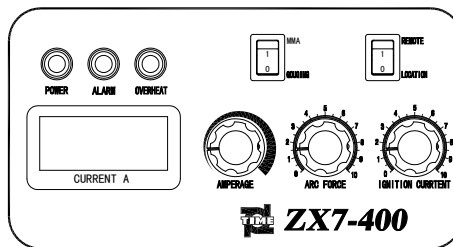
Standard outfits

Accessories	Code	PE60-400	PE60-400E	PE60-400F
300A Electrode holder	7857030000	●	●	●
400A Earth clamp	7858040000	●	●	●
Fast plug red	7500070011	●	●	●
Fast plug black	7500070010	●	●	●

● stand for available



ZX7-400



Carbon steel MMA current:105A



Carbon steel MMA current:115A



Carbon steel MMA current:100A

Technical Specifications

Model	ZX7-400	ZX7-400	ZX7-400
Company type	PE60-400	PE60-400E	PE60-400F
Rated input voltage (V)	3 phase 380V ± (15-20)% 50-60Hz		
Rated input current (A)	26	26	26
Rated Input capacity (kW)	14.4	14.4	14.4
No-load voltage (V)	76 ± 5%	76 ± 5%	76 ± 5%
Output current adjusting range (A)	20 ~ 400	20 ~ 400	20 ~ 400
Arc force adjusting range (A)	0 ~ 200	0 ~ 200	0 ~ 200
Ignition current adjusting range (A)	0 ~ 200	0 ~ 200	0 ~ 200
Carbon rod	Φ 4.0-Φ 8.0	Φ 4.0-Φ 8.0	Φ 4.0-Φ 8.0
Duty cycle (40°C)	60%	60%	60%
Efficiency (η)	≥ 85%	≥ 85%	≥ 85%
Power factor (cosΦ)	0.93	0.93	0.93
Insulation grade	F	F	F
Case protection grade	IP23S	IP23S	IP23S
Cooling	Wind	Wind	Wind
Dimensions (mm)	560 × 300 × 530	560 × 300 × 530	560 × 300 × 530
Net weight (kg)	33	34	33
Description	Plastic case, Wireless / wire remote controller is optional, Modular design, High output current stability, PE60-400: MMA and gouging (400A) can switch to each other by the transfer switch, pe60-400e : Cellulose welding, pe60-400F : Used with generator, Input power : 3 phase 220V is optional.		

Manual DC Arc Welding Machine



Standard outfits



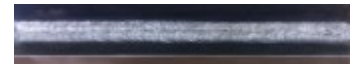
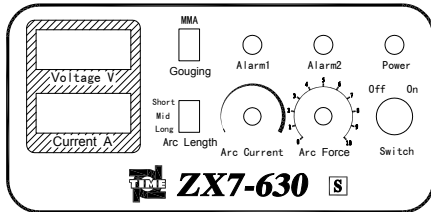
ZX7-630

Accessories	Code	PE50-500	PE60-500S	PE60-630S	PE52-630
300A Electrode holder	7857030000	●	●		
400A Earth clamp	7858040000	●	●		
Fast plug red	7500070011	●	●		
Fast plug black	7500070010	●	●		
500A Electrode holder	7857050000			●	●
500A Earth clamp	7858050000			●	●
Bending terminal(KDZ 120B)	7530120010				●

● stand for available



ZX7-500



Carbon steel MMA current:135A

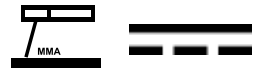


Carbon steel MMA current:110A

Technical Specifications

Model	ZX7-500		ZX7-630	
	PE50-500	PE60-500S	PE60-630S	PE52-630
Company type	PE50-500	PE60-500S	PE60-630S	PE52-630
Rated input voltage (V)	3 phase 380V ± 15% 50~60Hz		3 phase 380V ± 15% 50~60Hz	
Rated input current (A)	41	41	55.7	50
Rated input capacity (kW)	23	23	34.6	33
No-load voltage (V)	68 ± 5%	76 ± 5%	76 ± 5%	83 ± 5%
Output current range (A)	30~500	30~500	50~630	50~630
Arc force adjusting range (A)	0~400	0~400	0~200	-
Ignition current range (A)	0~200	0~200	0~400	-
Carbon rod	Φ4.0 - Φ8.0		Φ4.0-Φ14	Φ4-Φ16
Duty cycle (40℃)	60%	35%	35%	100%
Efficiency (η)	85%	85%	88%	85%
Power factor (cos Φ)	0.93	0.93	0.93	
Insulation grade	F	F	F	
Case protection grade	IP21S	IP23S	IP23S	IP23
Cooling	Wind	Wind	Wind	
Dimension (mm)	700 × 360 × 700	660 × 300 × 530	700 × 360 × 700	700 × 360 × 783
Net weight (kg)	53	50	57	75
Description	Metal case, Wired remote control is optional, Welding cable can be lengthened, The display of current and voltage can be switched to each other	Plastic case Wire remote controller is optional, Welding cable can be lengthened, Cellulose welding is optional	MMA/ air carbon arc gouging , Air carbon arc gouging with high efficiency, Wheel is optional, Wire remote controller is optional	Air carbon arc gouging with high efficiency, Φ 16mm carbon rod applicable, Duty cycle 100%, MMA/GOUGING

Container Type Welding Machine



Main features

- 6 sets or 4 sets of ZX7-400/500 install in one container
- Excellent shape, cables are tidy
- Easy to arc striking. Arc is stable. Good welding seam
- Container with lock, it is convenient to manage
- Except the door, the other three sides of the container are louver structure, well ventilated and waterproof
- The covers can be opened with angle adjustable
- Welding cable leads from the bottom of the power so the power structure is simple and easy to connect
- The remote control socket is placed in one side of the container so it is tidy
- Suitable for shipyard and other field environment, installation convenient and easy to manage



6/4 × ZX7-400

Technical Specifications

400A Welding machine

Item	Container with 4 sets of welding machine	Container with 6 sets of welding machine
Input voltage (V)	3 phase 380V ± 15% 50~60Hz	3 phase 380V ± 15% 50~60Hz
Rated input power (kW)	56	87
Dimension (L * W * H) (mm)	1070 × 720 × 1640	1430 × 750 × 1640
Container body net weight (kg)	125	195
Total weight (kg)	281	429

500A Welding machine

Item	Container with 4 sets of welding machine	Container with 6 sets of welding machine
Input voltage (V)	3 phase 380V ± 15% 50~60Hz	3 phase 380V ± 15% 50~60Hz
Rated input power (kW)	92	130
Dimension (L × W × H) (mm)	1070 × 750 × 1980	1430 × 750 × 1980
Container body net weight (kg)	150	220
Total weight (kg)	360	530

Triple Welding Machine



ZX7-3x400/500

Model	ZX7-3 × 400	ZX7-3 × 500
Input voltage (V)	3 phase 380V ± 15% 50 ~ 60Hz	
Rated output power (kW)	3 × 14.4	3 × 20
Rated no-load voltage (V)	75 ± 5%	75 ± 5%
No-load loss (W)	3 × 200	3 × 200
Output current adjustment range (A)	26 ~ 410	20 ~ 500
Rated duty cycle	60%	35%
Work cycle (min)	10	10
Power factor	0.8	0.8
Efficiency	85%	85%
Insulation grade	F	F
Case protection grade	IP21S	IP21S
Dimension (mm)	796 × 327 × 1056	796 × 327 × 1056
Weight (kg)	120	120
Feature	It can be used as three independent arc welding power sources, Widely used in shipbuilding and port machinery industry	

TIME

WELDING MACHINE

DC TIG/MMA Welding Machine

Suitable for welding various of metals except for Al, Mg and its alloys, Including: carbon steel, stainless steel, cast iron, copper, titanium and other metals

WS

Main features

IGBT inverter technology

Wide range of power supply

Good product consistency

Variety of TIG operation mode

High frequency arc ignition, welding penetration well

Performance stable, strong anti-interference ability

Thermal design is reasonable to protect the machine perfectly

Digital display meter for current to accurate preset welding current before welding

MMA function (200A above model)

Welding cables can be lengthened to 50~100M/50mm²

Remote controller

Type of remote controller	Welding machine suitable
H028	PNE60-400
RC-6	PNE61-400, PNE61-500
RC-8A	PNE60-400

Selection Tip

WS-400 (PNE60-400)

Over 200m length welding cable can be used at MMA

WS-400 (PNE60-400E)

Cellulose welding

WS-400 (PNE60-400F)

Suitable to use with generator

WS-400 (PNE61-400)

Whole digital welding machine

WS-500 (PNE61-500)

Whole digital welding machine

DC TIG/MMA Welding Machine



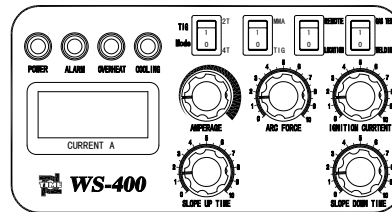
Standard outfits



WS-400

Accessories	Code	PNE60-400	PNE60-400E	PNE60-400F
WP-26 TIG torch	7852002600	●	●	●
300A Electrode holder	7857030000	●	●	●
400A Earth clamp	7858040000	●	●	●
Fast plug red	7500070011	●	●	●
Fast plug black	7500070010	●	●	●

● stand for available



Stainless steel TIG current:140A ~ 150A



Stainless steel TIG current:190A ~ 210A



Stainless steel TIG current: 210A

Technical Specifications

Model	WS-400	WS-400	WS-400
Company type	PNE60-400	PNE60-400E	PNE60-400F
Rated input voltage (V)	3 phase 380V ± 15% 50~60Hz	3 phase 380V ± 15% 50~60Hz or 3 phase 220V ± 15%	3 phase 380V ± 20% 50~60Hz
Rated input power (kW)	14.4	14.4	14.4
No-load voltage (V)	76 ± 5%	76 ± 5%	76 ± 5%
Output current adjusting range (A)	15~400	15~400	15~400
Slope up time (s)	0~10	0~10	0~10
Slope down time (s)	0~10	0~10	0~10
Pre-flow time (s)	0.5	0.5	0.5
Post-flow time (s)	5,10,15,30 adjustable	5,10,15,30 adjustable	5,10,15,30 adjustable
Ignition time (s)	0.05, 0.1, 0.2, 0.5 adjustable	0.05, 0.1, 0.2, 0.5 adjustable	0.05, 0.1, 0.2, 0.5 adjustable
Duty cycle (40°C)	60%	60%	60%
Efficiency	85%	85%	85%
Power factor	0.93	0.93	0.93
Insulation grade	F	F	F
Case protection grade	IP21S	IP21S	IP21S
Cooling method	Wind	Wind	Wind
Dimensions (mm)	560 × 300 × 530	560 × 300 × 530	560 × 300 × 530
Net weight (kg)	34	35	34
Description	Plastic case, Wireless/wire remote controller is optional, Modular design, High stability of output current, PNE60-400: Ignition success rate 100%, it is suitable for auto-welding, PNE60-400E: Cellulose welding, PNE60-400F: Used with generator.		

DC TIG/MMA Welding Machine



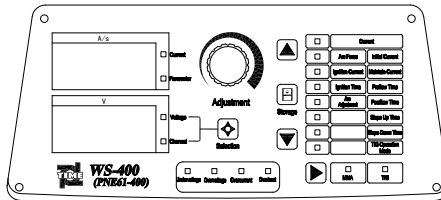
Standard outfits



WS-400/500

Accessories	Code	PNE61-400	PNE61-500
WP-26 TIG torch	7852002600	●	●
300A Electrode holder	7857030000	●	
500A Electrode holder	7857050000		●
400A Earth clamp	7858040000	●	●
Fast plug (DKJ50-70) (red)	7500070011	●	
Fast plug (DKJ50-70) (black)	7500070010	●	
Fast plug (DKJ70-95) (red)	7500095011		●
Fast plug (DKJ70-95) (black)	7500095010		●

● stand for available



Stainless steel TIG current: 75A



Stainless steel TIG current: 140A



Stainless steel TIG current: 160A

Technical Specifications

Model	WS-400	WS-500
Company type	PNE61-400	PNE61-500
Rated input voltage (V)	3 phase 380V ± 15% 50-60Hz	
Rated input power (kW)	17	23.5
No-load voltage (V)	76 ± 5%	78 ± 5%
Output current adjusting range (A)	5-410	5-510
Slope up time (s)	0.1~99.9	
Slope down time (s)	0.1~99.9	
Pre-flow time (s)	0~13	
Post-flow time (s)	0.1~50	
Ignition time (s)	0.01~1s	
Duty cycle (40°C)	60%	
Efficiency (η)	85%	
Power factor (cos Φ)	0.93	
Insulation grade	F	
Case protection grade	IP23S	
Cooling	Wind	
Dimensions (mm)	560 × 300 × 530	660 × 300 × 530
Net weight (kg)	34	41
Description	DSP technology, Cellulose welding is optional, RS-485 communication socket match RC-6 remote controller, Realization of remote setting and supervision by TIME TWPM welding process management system, Plastic case, excellent shape	

TIME

WELDING MACHINE

DC TIG/MMA Pulse Welding Machine

Suitable for Welding various of metals except for Al, Mg and its alloys

Especially suitable for welding sheet metal or metal of strong thermal sensitivity, welding quality is excellent.

WSM

Main features

IGBT inverter technology

Wide range of power supply

Good product consistency

Pulse frequency is adjustable

Variety of TIG operation mode

High frequency arc ignition, welding penetration well

Performance stable, strong anti-interference ability

Thermal design is reasonable to protect the machine perfectly

Digital display meter, welding current can be preset accurately

MMA function (200A above model)

Two TIG mode: DC TIG or Pulse TIG

Welding cables can be lengthened to 50~100M/50mm²

Remote controller

Type of remote controller	Welding machine suitable
RC-6	PNE61-400P

Selection Tip

WSM-200 (PNE20-200P)

Compact, portable

WSM-200 (PNE30-200P)

Compact, portable, power input: 3 phase 380V

WSM-400 (PNE61-315P)

Whole digital Pulse TIG welding machine

WSM-400 (PNE61-400P)

Whole digital Pulse TIG welding machine

DC TIG/MMA Pulse Welding Machine



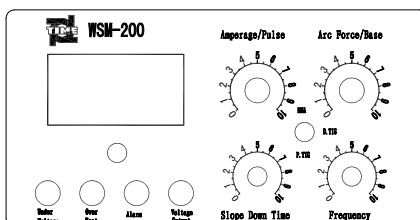
Standard outfits



WSM-200

Accessories	Code	PNE20-200P	PNE30-200P
WP-17 TIG torch	7852017035	●	●
300A Electrode holder	7857030000	●	●
400A Earth clamp	7858040000	●	●
Fast plug (K6B) red	7500006010	●	●
Fast plug (K6B) black	7500006011	●	●

● stand for available



Stainless steel Pulse TIG
Base current:12A Peak current:25A



Stainless steel Pulse TIG
Base current:50A Peak current:100A

Technical Specifications

Model	WSM-200	WSM-200
Company type	PNE20-200P	PNE30-200P
Rated input voltage (V)	Single phase 220V ± 15% 50~60Hz	3 phase 380V ± 15% 50~60Hz
Rated input capacity (kW)	6.6	3.6
No-load voltage (V)	57 ± 5%	54
Output current adjusting range (A)	5~200 (TIG)	5~200 (TIG)
Pulse frequency (Hz)	0.5~15	0.5~15
Thrust current range (A)	0~100A/ms	0~100A/ms
Slope up time (s)	0.1~99.9	0.1~99.9
Slope down time (s)	0.1~99.9	0.1~99.9
Spot time (s)	0.01~9.99	0.01~9.99
Pre-flow time (s)	0~13	0~13
Post-flow time (s)	0.1~50	0.1~50
Pulse ratio range	0.1%~99.9%	0.1%~99.9%
Duty cycle (40℃)	35%	35%
Power factor	0.93	0.93
Efficiency	85%	85%
Insulation grade	F	F
Case protection grade	IP21S	IP21S
Cooling	Wind	Wind
Dimensions (mm)	455 × 214 × 340	455 × 214 × 340
Net weight (kg)	11	11
Description	Widely used in power plant maintenance, Pointer type current meter.	

DC TIG/MMA Pulse Welding Machine

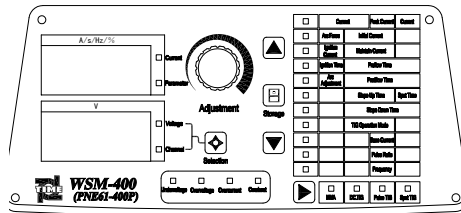
Standard outfits



WSM-315/400

Accessories	Code	PNE61-315P	PNE61-400P
WP-26 TIG torch	7852002600	●	●
300A Electrode holder	7857030000	●	●
400A Earth clamp	7858040000	●	●
Fast plug (black)	7500070010	●	●
Fast plug (red)	7500070011	●	●

● stand for available



Stainless steel Pulse TIG
Base current: 50A Peak current: 220A



Stainless steel Pulse TIG
Base current: 15A Peak current: 30A



Stainless steel Pulse TIG
Base current: 200A Peak current: 240A

Technical Specifications

Model	WSM-315	WSM-400
Company type	PNE61-315P	PNE61-400P
Rated input voltage (V)	3 phase 380V ± 20% 50~60Hz	
Rated input capacity (kW)	17	
No-load voltage (V)	60 ± 5%	76 ± 5%
Output current adjusting range (A)	5~315	5~410
Pulse frequency (Hz)	0.1~500	
Thrust current range (MMA)	0~1500A/ms	
Slope up time (s)	0.1~99.9	
Slope down time (s)	0.1~99.9	
Spot welding time (s)	0.01~9.99	
Pre-flow time (s)	0~13	
Post-flow time (s)	0.1~50	
Pulse ratio range	0.1%~99%	
Duty cycle (40°C)	60%	
Power factor	0.93	
Efficiency	85%	
Insulation grade	F	
Case protection grade	IP21S	
Cooling	Wind	
Dimensions (mm)	560 × 300 × 530	
Net weight (kg)	34	
Description	Digital welding machine, DSP technology, RS-485 communication socket match RC-6 remote controller, Plastic case, excellent shape.	

TIME

WELDING MACHINE

AC/DC Pulse TIG/MMA Square Wave Welding Machine

AC Square Wave TIG / Pulse TIG / DC TIG / MMA,

Suitable for welding of Al, Mg and its alloys, carbon steel, stainless steel, cast iron, copper, titanium and other metal

Main features

IGBT inverter technology

Microcomputer control technology

Welding parameter automatically stores

Parameters in panel are set by coordinate-type touch key and the single knob for adjustment

Eight operating modes for DC TIG, DC pulse TIG separately

AC square wave TIG / Pulse TIG / DC TIG / Spot TIG/MMA functions

Mainly be used for welding of aluminum, magnesium aluminum alloy and its alloys in the field of aviation, aerospace, air separation equipment, radiator, aluminum pipe, bicycle, pressure vessel, furniture industry and so on

Selection Tip

WSE-315 (PNE30-315ADP)	suitable to welding 0.5mm~18mm thickness aluminum alloy plate, double-sided butt welding function, duty cycle 60%
WSE-315 (PNE32-315ADP)	suitable to welding 0.5mm~20mm thickness aluminum alloy plate, double-sided butt welding function, duty cycle 100%
WSE-500 (PNE30-500ADP)	suitable to welding 0.5mm~25mm thickness aluminum alloy plate, double-sided butt welding function, foot switch is optional
WSE-500 (PNE31-500ADP)	suitable to welding aluminum alloy plate with thickness below 25mm, double-sided butt welding function, foot switch is optionalDuty cycle 100%
WSE-630 (PNE30-630ADP)	suitable to welding aluminum alloy plate with thickness below 35mm

AC/DC Pulse TIG/MMA Square Wave Welding Machine

Standard outfits



WSE-315/500/630

Accessories	Code	WSE-315	WSE-500	WSE-630
WP-18 TIG torch	7851018043	●		
WP-12 TIG torch	7851012041		●	●
400A Earth clamp	7858040000	●		
500A Earth clamp	7858050000		●	
630A Earth clamp	7858063000			●
Fast plug (DKJ70)	7500070011/10	●		
Fast plug (DKJ95)	7500095011/10		●	
Bending terminal KDE120B	7530120011			●
Cable\YH35mm ² (4m)	7710000350	●		
Cable\YH50mm ² (4m)	7710000500		●	
Cable\YH95mm ² (4m)	7710000950		●	●

● stand for available



Aluminum alloy
AC/DC square wave welding
Current: 120A ~ 130A



Aluminum-magnesium alloy
AC/DC square wave welding
Current: 155A

Technical Specifications

Model	WSE-315	WSE-500	WSE-630
Company type	PNE30/32-315ADP	PNE30/31-500ADP	PNE30-630ADP
Rated input voltage (V)	3 phase 380V ± 10% 50~60Hz		
Rated input capacity (kW)	12.1	17.6	25.2
No-load voltage (V)	66 ± 5%	76 ± 6%	83 ± 6%
Output current adjusting range (A)	12 ~ 315	12 ~ 510	20 ~ 630
Pulse frequency (Hz)	0.5 ~ 200		
Pulse ratio range	10% ~ 90%		
Slope up time (s)	0 ~ 10		
Slope down time (s)	0 ~ 10		
Spot time (s)	0.2 ~ 5	0.2 ~ 5	0.2 ~ 5
Pre-flow time (s)	0.1 ~ 1.5		
Post-flow time (s)	1 ~ 15		
Arc striking time (MMA)	0.01 ~ 0.5		
AC frequency (Hz)	20 ~ 100	20 ~ 70	
AC Balance	10 ~ 50		
Duty cycle (40°C)	60% / 100%	60% / 100%	60%
Efficiency	≥ 85%		
Power factor	0.93		
Insulation grade	F		
Case protection grade	IP21S		
Cooling	Wind		
Dimensions (mm)	700 × 360 × 780		
Net weight (kg)	63	68/72	72
Description	Welding cable can be lengthened to 60 meters (automatically alarm when the cable wings on welding mode), Double welding function is optional, Foot switch is optional, In AC TIG mode, the current displaying is effective value, Interface for the alarm function of water cooler.		

TIME

WELDING MACHINE

Semi-Automatic Gas Shielded (CO₂/MIG/MAG) Welding Machine

NB

It adopts waveform control technology for CO₂/MIG/MAG function
Suitable for welding: carbon steel, stainless steel, Al, Mg and its alloy with solid/flux cored wire

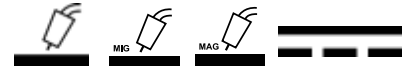
Main features

IGBT inverter technology
Wide range of power supply
Welding operation mode is divided into 2 step and 4 step
Digital display of welding voltage, welding current
Wire feeding slowly to improve the success rate of arc ignition at welding start
Wire feeder adopts dual drive system, wire feeding is stable
Arc ignition easy, arc crater function
Microcomputer control, performance is stable and reliable
Waveform control technology makes welding process stable and less spatters
Real-time waveform control for whole welding process to make the dynamic performance excellent
Functions like presetting of welding voltage and wire feeding speed, and wire diameter selection etc.

Selection Tip

NB-250 (A160-250)	Suitable for welding thin sheet	NB-500 (A160-500A)	Duty cycle 100%
NB-350 (A160-350S)	Wire feeder is single drive	NB-500 (A160-500B)	MMA/MIG/MAG
NB-350 (A160-350T)	Spot welding function available	NB-500 (A160-500BT)	MMA/MIG/MAG/scratch TIG
NB-350 (A160-350)	Wire feeder is dual drive	NB-500 (A160-500F)	Digital display meter wire feeder
NB-400 (A160-400)	Wire feeder is dual drive	NB-630 (A160-630A)	Duty cycle 100%
NB-400 (A160-400B)	MMA/MIG/MAG	NB-630 (A160-630B)	MAG/MMA/carbon arc gouging
NB-500 (A160-500S)	Wire feeder is dual drive, suitable for welding wire Φ 1.2		
NB-500 (A160-500T)	Spot welding function available		
NB-500 (A160-500)	Wire feeder is dual drive, mainly used for welding wire Φ 1.2 and Φ 1.6		

Semi-Automatic Gas Shielded Welding Machine



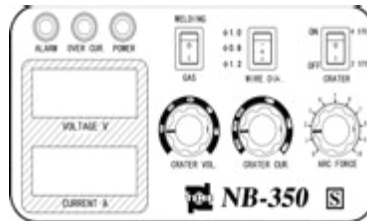
Standard outfits

Accessories	Code	A160-250	A160-350 / 350S/350T	A160-400 / 400B
Welding torch MB15KD	7852050032	●		
Welding torch MB36KD	7852050032		●	●
35mm ² Earth cable 4 meter	7710000350	●		
50mm ² Earth cable 4 meter	7710000500		●	●
400A Earth clamp	7858040000	●	●	●
Fast plug (DKJ35-50) (red)	7500050021	●		
Fast plug (DKJ35-50) (black)	7500050020	●		
Fast plug (DKJ50-70) (red)	7500070011		●	●
Fast plug (DKJ50-70) (black)	7500070010		●	●
Plug for flow meter	7356000001	●	●	●

● stand for available



NB-250/350/400



Carbon steel MIG all-position
Current: 120A ~ 140A Voltage: 19V ~ 21V

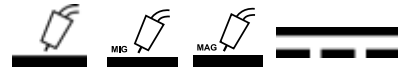


Carbon steel MIG horizontal position
Current: 130A ~ 140A Voltage: 19V ~ 21V

Technical Specifications

Model	NB-250	NB-350	NB-400
Company type	A160-250	A160-350/350S/350T	A160-400 / 400B
Rated input voltage (V)	3 phase 380V ± 15% 50~60Hz		
Rated input current (A)	12.5	25.5/20	27
Rated input power (kW)	8.3	16.8/13.2	18
Voltage adjusting range (V)	15~30	15~40	15~40
No-load voltage (V)	46 ± 5%	66 ± 5%	66 ± 5%
Current range (A)	20~250	30~350	30~400
Wire feeding speed range (m/min)	2~15	2~25	2~25
Suitable welding wire dia.(mm)	Φ0.8/Φ1.0 (Carbon steel)	Φ0.8/Φ1.0/Φ1.2 (Steel)	Φ0.8/Φ1.0/Φ1.2 (Carbon steel)
Welding wire type	Solid/flux-cored		
Duty cycle (40°C)	100%	35% / 60%	60%
Efficiency	85%		
Power factor	0.93		
Insulation grade	F		
Case protection grade	IP23		IP23S
Cooling	Wind		
Dimensions (mm)	500 × 300 × 530	560 × 300 × 530	560 × 300 × 530
Weight of power source (kg)	40		41
Weight of wire-feeder (kg)	13		
Description	Strong adaptability to length of wire extension, Welding cable can be lengthened to 30M, The comprehensive cable is 35mm ² , wire feeder is dual drive.	Strong adaptability to length of wire extension, The comprehensive cable is 50mm ² , Plastic case, humanized design, A160-350s: Wire feeder single drive and duty cycle 35%, A160-350: Wire feeder dual drive and duty cycle 60%, A160-350T: Spot welding function available, A160-400: Wire feeder dual drive, A160-400B: Wire feeder dual drive and MMA function.	

Semi-Automatic Gas Shielded Welding Machine



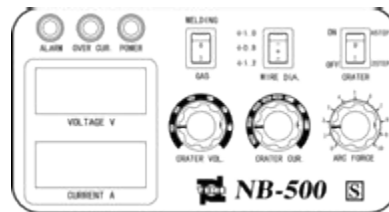
Standard outfits

Accessories	Code	A160-500S/500T	A160-500	A160-500A	A160-500B/A160-500BT A160-500F
Welding torch MB40KD	7852050032	●	●	●	●
60mm ² Earth cable 4 meter	7710000600	●	●	●	●
500A Earth clamp	7858050000	●	●	●	●
Bendig terminal (KDZ95B)	7532950000	●	●	●	●
Plug for flow meter	7356000001	●	●	●	●

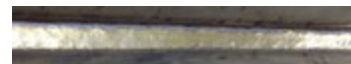
● stand for available



NB-500



Carbon steel MIG vertical position
Current: 125A Voltage: 18.5V

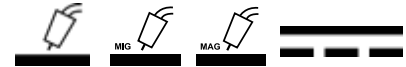


Stainless steel MIG flux-cored wire
Current: 180A ~ 210A Voltage: 24V ~ 27V

Technical Specifications

Model	NB-500			
	A160-500S	A160-500T/F	A160-500A	A160-500BT
Company type	A160-500S	A160-500T/F	A160-500A	A160-500BT
Rated input voltage (V)	3 phase 380V ± 15% 50 ~ 60Hz		3 phase 380V ± 10% 50 ~ 60Hz	
Rated input current (A)	24	32	42	32
Rated input power (kW)	15.8	21	27.6	21
Voltage adjusting range (V)	15 ~ 45			
No-load voltage (V)	64	72	72	72
Current range (A)	30 ~ 500	30 ~ 500	30 ~ 500	30 ~ 500
Wire feeding speed range (m/min)	2 ~ 22	2 ~ 25	2 ~ 25	2 ~ 25
Suitable welding wire dia. (mm)	Φ0.8/Φ1.0/Φ1.2 (Carbon steel)	Φ1.0/Φ1.2/Φ1.6 (Carbon steel)	Φ1.0/Φ1.2/Φ1.6 (Carbon steel)	Φ1.0/Φ1.2/Φ1.6 (Carbon steel)
Welding wire type	Solid / flux-cored			
Duty cycle (40°C)	60% (25°C)	60%	100%	35% (gouging) 60% (MIG/MMA/TIG)
Efficiency	85%		90%	
Power factor	0.93			
Insulation grade	F			
Case protection grade	IP23			
Cooling	Wind			
Dimensions (mm)	660 × 300 × 530			
Weight of power source (kg)	45	49	50	49
Weight of wire-feeder (kg)	13			
Description	Strong adaptability to length of wire extension, The comprehensive cable is 60mm ² , Welding cable can be lengthened to 50 meters, wire feeder is dual drive, A160-500T: Spot welding function available, A160-500F: Digital display meter wire feeder.		Strong adaptability to length of wire extension, Wire feeding inching function, The comprehensive cable is 60mm ² , Wire feeder is dual drive, Welding cable can be lengthened to 50 meters, A160-500B: MMA function and its arc force current and ignition current is adjustable, Power input : 3 phase 220V is optional, A160-500BT: MMA/MIG/MAG/scratch TIG	

Semi-Automatic Gas Shielded Welding Machine



Standard outfits

Accessories	Code	A160-630A	A160-630B
Welding torch MB40KD	7852050032	●	●
70mm ² Earth cable 4 meter	7710000700	●	●
500A Earth clamp	7858063000	●	●
Bendig terminal (KDZ120B)	7530120010	●	●
Plug for flow meter	7356000001	●	●

● stand for available



NB-630



Carbon steel MIG horizontal position
Current: 140A ~ 160A Voltage: 21.5V ~ 23V



Stainless steel MIG flux-cored wire
Current: 270A Voltage: 27.7V

Technical Specifications

Model	NB-630	NB-630
Company type	A160-630A	A160-630B
Rated input voltage (V)	3 phase 380V ±(15-20)% 50 ~ 60Hz	3 phase 380V ±(15-20)% 50 ~ 60Hz
Rated input current (A)	61	61
Rated input power (kW)	40	40
No-load voltage (V)	73 ± 5%	73 ± 5%
Duty cycle (40℃)	100%	100%
Current range (A)	100-630	100-630
Voltage adjusting range (V)	15-50	15-50
Suitable welding wire dia. (mm)	Φ 1.0/Φ 1.2/Φ 1.6 (Carbon steel) solid wire	Φ 1.0/Φ 1.2/Φ 1.6 (Carbon steel) solid wire
Efficiency	85%	85%
Power factor	0.93	0.93
Insulation grade	F	F
Case protection grade	IP23	IP23
Cooling	Wind	Wind
Dimensions (mm)	700 × 360 × 783	700 × 360 × 783
Weight of power source (kg)	82	82
Description	With 70mm ² cable, Wire feeder is dual drive, Wire feeding inching function, Welding cable can be lengthened to 50 meters, Water cooler is optional.	MIG/MAG/MMA/ carbon arc gouging, The comprehensive cable is 70mm ² wire, Wire feeder is dual drive, Wire feeding inching function, Welding cable can be lengthened to 50 meters, Water cooler is optional.

Semi-Automatic Gas Shielded Welding Machine



I Wire feeder FP60-100FE (optional)

Voltage for wire feeding	DC24V
Rated current	3A
Wire feeding speed	1.5-20 m / min
Dia. of wire	Φ0.8- Φ1.6mm Solid/flux-cored
Load capacity of wire	20kg Φ300 × Φ50 × 105mm
Dimensions	635 × 250 × 390mm
Weight	15kg



FP60-100FE

II Wire feeder SB-10F-1 (optional)

Voltage for wire feeding	DC24V DC18.3V
Rated current	3A
Wire feeding speed	1.5-18 m / min
Dia. of wire	Φ0.8- Φ1.6mm Solid/flux-cored
Load capacity of wire	20kg Φ300 × Φ50 × 103mm
Dimensions	635 × 250 × 390mm
Weight	15kg



SB-10F-1

III Light CO₂/MIG/MAG wire feeder tractor

Input voltage of the travel mechanism (V)	DC 110V (SERVO MOTOR)
Input current of the travel mechanism (A)	0.4
Input voltage of the wire feeding mechanism (V)	DC18.3/DC24 (Printed motor)
Input current of the wire feeding mechanism (A)	5/5.5
Wire feeding method	Continuous
Welding speed range (m/min)	0.2-2.2
Wire feeding speed range (m/min)	1.5-15/1.5-20
Suitable for rated welding current (A)	500
Application of wire diameter (mm)	1.0/1.2/1.6/2.0
Welding wire type	Solid/flux-cored wire
Welding torch swing angle.	± 90°
Deflection angle of torch	± 45°
Distance adjustable for torch	50 × 60 (longitudinal * transverse) (not including coarse adjustment)
Wire spools capacity (kg)	20
Dimension (L × W × H) (mm)	480 × 480 × 680
Weight (kg)	32



FD60-500NB

Mobile Cartridge Welding Fume Extractors

Main features

- Adopt barrel type filter with high filtration efficiency (up to 99.9%), filter area is large (15m²), filter replacement cycle longer and the replacement cost lower
- Small volume, it is with four foot wheels so as to move easily
- With flexible arm which can rotate 360° so as to absorb dust from the source
- Suitable for MIG/MAG welding, SAW welding, TIG welding, MMA and so on
- Energy saving, low power, strong suction, low noise



TA-001



TA-002



TA-003

Technical Specifications

Model	TA-001	TA-002	TA-003
Air flow rate	1200m ³ / hour	1200m ³ / hour	1200m ³ / hour
Filtration efficiency	>99.9% (welding fume)	>99.9% (welding fume)	>99.9% (welding fume)
Motor power	0.75kW	0.75kW	0.75kW
Filter	Easy to clean and replace	Easy to clean and replace	Easy to clean and replace
Dimension (mm)	610 × 520 × 1020	550 × 1030 × 560	1000 × 580 × 560
Power supply	220V 50Hz	220V 50Hz	220V 50Hz
Description	Filter replacement cycle is long and it is about 2–3 years to replace according to 8 workhours a day.	Filter replacement cycle is long and it is about 4 years to replace according to 8 workhours a day. Cleaning valve connects to the compression air to clean conveniently.	Filter replacement cycle is long and it is about 2–3 years to replace according to 8 workhours a day. Cleaning valve connects to the compression air to clean conveniently.

TIME

WELDING MACHINE

LGK MACHINE

Air Plasma Cutting Machine

Suitable for cutting carbon steel, stainless steel, copper, aluminum and other metals

LGK

Main features

Inverter technology

High efficiency and energy saving

Cutting current can be adjusted continuously

Post gas function

Suitable for large CNC cutting machine

Neat incision, smooth without polishing

High successful rate of arc ignition, performance stable

The digital controller is used to control the current and gas parameters of plasma cutting accurately, so as to realize the optimal cutting process

Imported water cooling cutting torch can greatly reduce the consumption of wearing parts in the cutting process and reduce the cost

Selection Tip

TDL 600/800/1000/1000H/1200/1200H

Intelligent digital plasma cutting machine

LGK-200 (PG10-200)

High frequency arc striking, suitable for cutting sheet (Thickness below 50mm)

LGK-200 (PG20-200)

High definition plasma cutting machine

LGK-400 (PG20-400)

High definition plasma cutting machine

Air Plasma Cutting Machine



Standard outfits



TDL 600/800/1000/1200

Accessories	Code	TDL 600	TDL 800	TDL 1000/1000H	TDL 1200/1200H
SC120 cutting gun (6m)	7854SC1200				●
P-80-LF cutting gun (5m)	78520P8050	●	●	●	
16mm ² cable (4m)	7710000160	●	●		
25mm ² cable (4m)	7710000250			●	●
Φ8 oxygen tube (3m)	7813000080	●	●	●	●
400A Earth clamp	7858040000	●	●	●	●
Fast plug (DKJ16-1) (black)	750DKJ1010	●	●	●	●
Filter pressure reducing valve AFR2000-0.5\8BA	7358200000	●	●	●	●

● stand for available



Carbon steel
Cutting current: 120A



Technical Specifications

Model	TDL 600	TDL 800	TDL 1000/1000H	TDL 1200/1200H
Rated input voltage	3 phase AC 380V ± 15% 50 ~ 60Hz			
Rated input current (A)	9.8A	13.4A	22.4A	29.4A
Rated input power (kW)	6.5	9	13.8	17.7
Rated output capacity (X=60%)	60A/104V	80A/112V	100A/120V	120A/128V
Rated no-load voltage (V)	307 ± 5%		307 ± 5%	
Rated no-load current (A)	< 1			
Energy efficiency grade	Grade 2			
Power factor (COS φ)	0.9	0.9	0.9	0.9
Efficiency (η)	90%	90%	90%	90%
Rated duty cycle (40°C)	60%	60%	60% / 100%	60% / 100%
Insulation grade	F			
Case protection grade	IP23S			
Output current (A)	20 ~ 60	25 ~ 80	30 ~ 100	30 ~ 120
Arc striking current (A)	Non high frequency			
Maximum cutting through thickness (mm)	35	40	45	50
Quality cutting (mm) (Carbon steel)	20	25	30	35
Quality cutting (mm) (Stainless steel)	15	20	25	30
Piercing cutting thickness (mm)	10	12	15	20
Dimension (L × W × G) (mm)	592 × 290 × 503		650 × 326 × 567	
Net weight (kg)	33		46	

Air Plasma Cutting Machine



Standard outfits

Accessories	Code	PG10-200	PG20-200	PG20-400
Water cooler TCS2008-200\H193-03	1110H19310	●	●	●
HF unit PH10-200\H193-02	2ZH1932100	●	●	●
Earth clamp \500A	7858050000	●	●	●



LGK-200



Carbon steel
Cutting current: 260A

Technical Specifications

Model	LGK-200	LGK-200	LGK-400
Company type	PG10-200	PG20-200	PG20-400
Input voltage	3 phase 380V ± 10% 50-60Hz	3 phase 380V ± 10% 50-60Hz	3 phase 380V ± 10% 50-60Hz
Rated input power (kW)	37.5	37.5	75
No-load voltage (V)	290 ± 5%	290 ± 5%	290 ± 5%
Current range (A)	40 ~ 200	40-200	40-400
Rated output voltage (V)	150	150	150
Rated duty cycle (40°C)	100%	100%	100%
Efficiency	85%		
Power factor	0.93		
Maximum cutting through thickness (mm)	64	64	100
Quality cutting thickness (mm)	50	50	80
Insulation grade	F		
Case protection class	IP21		
Cooling	Wind		
Dimension (L × W × G) (mm)	1130 × 670 × 905	1130 × 670 × 905	(1130 × 670 × 905) × 2
Weight (kg)	480	480	960
Gas flow (L/min)	40 ~ 200	40 ~ 200	40 ~ 200
Description	HF arc striking, Water cooling cutting torch, handheld / used for CNC machine, Suitable for cutting medium thickness plate.	Controller uses touch screen, expert database integrated, Multi gas control technology to cut the stainless steel without oxygen so as to save money.	

TIME

WELDING MACHINE

Automatic Submerged Arc Welding Machine

MZ

Automatic submerged arc welding of carbon steel and other metals
Suitable for surfacing, MIG (thick wire), carbon arc gouging

Main features

IGBT inverter technology

Constant current / constant voltage

Welding current, welding voltage and tractor moving speed can be preset and displayed digitally.

The tractor's mechanical adjustment is convenient. The tractor moves stably to adapt a variety of working conditions

Arc ignition/arc withdraw adopt automatic 'retracting' control

MMA and air carbon arc gouging

Welding thickness is not less than 3mm

Variety of tractor is optional.

Model of tractor

FD10/11/12/13-200TS	Tractor for flat position welding and hull welding	FD13-150T	Tractor for hull welding
FD10/11/12/13-200TZ	Tractor for flat position welding	FD11/12-200TU	Tractor for surfacing
FD10/11/12/13-200TQ	Light duty tractor	FD21/22-200T	Tractor with digital control
FD10/11/12-200TH	Heavy duty tractor		

Selection Tip

MZ-630 (A310-630)

Suitable for welding sheet (Thickness more than 3mm)

MZ-630 (A320-630)

Fine wire submerged arc welding machine

MZ-1000 (A310-1000)

Suitable for welding plate (Thickness more than 5mm)

MZ-1250 (A310-1250)

Suitable for welding plate (Thickness more than 5mm)

MZ-1000 (A311-1000)

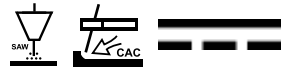
digital submerged arc welding machine

MZ-1250 (A311-1250)

digital submerged arc welding machine

Z type machine can be used for carbon arc gouging, also can work with user's own wire feeding system.

Automatic Submerged Arc Welding Machine



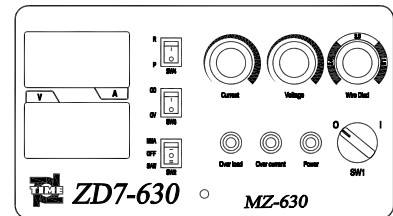
Standard outfits

Accessories	Code	A310-630	A320-630	A310-1000	A310-1250
Cable\YH95mm ² (5m) 1 PC	24H0820050	●	●		
Cable\YH70mm ² (5m) 2 PC	24H1020050			●	●
Cable\YH95mm ² (15m) 1 PC	24H0820150	●	●		
Cable\YH70mm ² (15m) 2 PC	24H1020150			●	●
Control cable 15 meter	24H082A150	●	●	●	●
Tractor 1 set		●	●	●	●
Power cable (3m)	24H1150030	●	●		
Power cable (3m)	24H082B030			●	●
Guide rail 0.98M (2 pieces)	7880600000	●	●	●	●

● stand for available



MZ-630/1000/1250



Aluminum alloy Thick wire MIG
Current: 400A ~ 450A
Voltage: 31V ~ 32V

Technical Specifications

Model	MZ-630	MZ-630	MZ-1000	MZ-1250
Company type	A310-630	A320-630	A310-1000	A310-1250
Input voltage	3 phase 380V ± (15%~20%) 50~60Hz			
Rated input current (A)	50	50	80	100
Rated input power (kW)	33	40	52	65
Voltage adjusting range (V)	20~50	15~55	20~50	20~50
Current adjusting range (A)	120~630	100~630	150~1000	150~1250
Duty cycle (40℃)	100%	100%	100%	60% / 100%
Welding tractor travel speed range (m/h)	6~72			
Wire feeding rate range (m/min)	1~6.5	1~9	0.5~2.5	0.5~2.5
Suitable welding wire dia. (mm)	φ 1.6~ φ 2.4	φ 1.6~ φ 3.2	φ 3.2~ φ 5.0	φ 3.2~ φ 5.0
Efficiency	92%			
Power factor	0.92			
Insulation grade	F			
Case protection grade	IP23			
Cooling mode	Wind			
Dimensions of power source (mm)	810 × 345 × 1022	700 × 360 × 790	810 × 345 × 1022	810 × 345 × 1022
Net weight of power source (kg)	90	82	98	98
Dimensions of welding tractor (mm)	1038 × 480 × 628			
Net weight of welding tractor (kg)	54			
Description	Suitable for sheet welding.	Excellent CV characteristics, Excellent fine wire welding performance.	Z type machine: PS10-1000Z, It can be used for SAW welding and surfacing and carbon arc gouging if the user outfits the wire feeding system by themselves, A310-1000 : Input power 3 phase 220V is optional.	Z type machine: PS10-1250Z, It can be used for SAW welding and surfacing and carbon arc gouging if the user outfits the wire feeding system by themselves.

Automatic Submerged Arc Welding Machine



Standard outfits

Accessories	Code	A311-1000	A311-1250
70mm ² Cable (5m) (2PCS)	24H1020050	●	●
70mm ² Cable (15m) (2PCS)	24H1020150	●	●
Control cable 15m	24H082A150	●	●
Welding tractor		●	●
Input cable (3m)	24H082B030	●	●
Guide rail 0.98M (2pcs)	7880600000	●	●

● stand for available



MZ-1000/1250



Carbon steel automatic submerged arc welding

Current: 400A ~ 450A
Voltage: 31V ~ 32V

Technical Specifications

Model	MZ-1000	MZ-1250
Company type	A311-1000	A311-1250
Rated input voltage (V)	3 phase 380V ± 15% 50-60Hz	3 phase 380V ± 15% 50-60Hz
Rated input current (A)	80	100
Rated input power (kW)	52	65
Voltage adjusting range (V)	20 ~ 50	20 ~ 50
Current adjusting range (A)	150 ~ 1000	150 ~ 1250
Duty cycle (40°C)	100%	60%
Welding tractor travel speed (m/h)	6 ~ 72	6 ~ 72
Wire feeding speed (m/min)	0.5 ~ 2.5	0.5 ~ 2.5
Welding wire dia. (mm)	φ 3.2 ~ φ 5.0	φ 3.2 ~ φ 5.0
Efficiency	92%	92%
Power factor	0.92	0.92
Insulation grade	F	F
Case protection grade	IP23	IP23
Cooling method	Wind	Wind
Dimension of power source (mm)	810 × 345 × 1022	810 × 345 × 1022
Weight of power source (kg)	98	98
Dimension of welding tractor (mm)	1038 × 480 × 628	1038 × 480 × 628
Weight of welding tractor (kg)	54	54
Description	Automatic digital submerged arc welding machine	Automatic digital submerged arc welding machine

Automatic Submerged Arc Welding Tractor



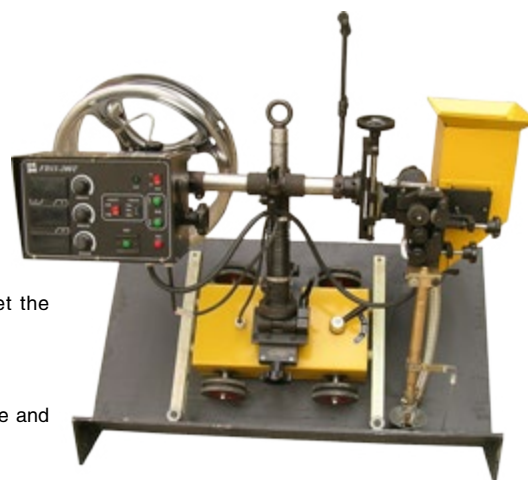
FD13-150T

FD13-150T submerged arc welding fillet tractor

- Welding torch adopts special hose, and controlled by spring to realize automatic welding of flat fillet weld and large curvature radius.
- Welding speed range: 15m/h ~ 98m/h.
- Wire feeding speed range: 0.9m/min ~ 6.3m/min.
- Wire diameter range: $\Phi 1.6 \sim \Phi 2.5$
- Four wheel drive for tractor to move smoothly.
- Press the wire elastic so as to ensure wire feeding stable.
- Guide rod is optional to realize the profiling welding.
- Mainly used in crane industry, container truck, steel structure industry etc.

FD10/11/12-200TS welding tractor

- Welding speed range: 12m/h ~ 90m/h.
- Wire feed speed range: 0.3m/min ~ 3m/min.
- Wire diameter range : 2.4 ~4.0mm (FD10),
3 ~5.0mm (FD11),
3 ~6.0mm (FD12),
- Four wheel drive for tractor to improve the stability of walking.
- Column hinge is optional to realize the column tilted about to meet the requirements of fillet welding in the downhand position.
- Welding head can be adjusted by six degree freedom conveniently.
- Tapered wire feeding gear makes that wire feeding is stable and reliable and effectively reduce the load of the motor.
- Elastic pressing of welding wire makes the wire feeding stable
- The wire disc is open or closed.
- Many choices of beam length.
- Contract tip: straight type (standard), roller type conductive device, splint type conductive device, narrow gap conductive device.
- Rail: heavy rail (standard outfits), light rail.



FD10/11/12-200TS

FD10/11/12-200TQ light submerged arc welding tractor

Small size. It is suitable for welding of circumferential seam of pipes with diameter over than 800mm and longitudinal seam of pipes with diameter over than 600mm. The combination of tapered wire feeding gears ensures wire feeding stable and reliable and improve the service life of the rollers. It's mainly used for the welding of inner longitudinal seam and inner circumferential seam of pipes.



FD10/11/12-200TQ

TIME

WELDING MACHINE

Commercial welding machine

Features:

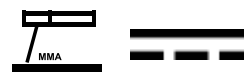
- IGBT inverter technology
- The maximum output current reaches the calibration value
- Duty cycle is tested at an ambient temperature of 40°C

Application:

- For users in production, installation and maintenance in the field of hardware and light industry
- Meet the reliability requirements of industrial machine
- Low no-load voltage technology, safe to use

***Portable and Practical high
quality welding machine***

Manual DC Arc Welding Machine



Standard outfits

Accessories	Code	TAZ1600A	TAZ1605A	TAZ2100A	TAZ2105A
Fast plug red	7509000160	●	●	●	●
Fast plug black	7509000160	●	●	●	●

●stand for available



TAZ 1600A/2100A



TAZ 1605A/2105A



Carbon steel MMA current: 150A

Technical Specifications

Model	TAZ 1600A	TAZ 1605A	TAZ 2100A	TAZ 2105A
Rated input voltage (V)	AC120V / 240V ± 15% 50-60Hz		AC240V ± 15% 50-60Hz	
Rated input current (A)	10.6 / 15.2	20.7 / 27.8	19.4	43.4
No-load voltage (V)	91	91	85	85
Output current adjusting range (A)	20 ~ 65 / 20 ~ 160	20 ~ 65 / 20 ~ 160	25 ~ 210	25 ~ 210
Duty cycle (40°C)	20% / 30%	20% / 30%	20%	20%
Efficiency	85%	85%	85%	85%
Insulation grade	H	H	H	H
Case protection grade	IP23S	IP21S	IP23S	IP21S
Cooling	Wind	Wind	Wind	Wind
Dimensions (mm)	325 × 180 × 280	336 × 180 × 265	325 × 180 × 280	336 × 180 × 265
Net weight (kg)	5	6.6	5	6.6
Description	Dual power input adaptive, ETL approval.	Metal shell, ETL approval.	ETL approval.	Metal shell, ETL approval.

Manual DC Arc Welding Machine



Standard outfits

Accessories	Code	ZX7-160S	ZX7-250S	ZX7-400S
Fast plug black (2 pcs)	7509000160	●		
Fast plug black (2 pcs)	7503550010		●	●

● stand for available



Technical Specifications

Model	ZX7-160S	ZX7-250S	ZX7-400S
Rated input voltage (V)	Single phase 220V 50 ~ 60Hz	Single phase 220V 50 ~ 60Hz	3 phase 380V 50 ~ 60Hz
Rated input current (A)	18.3	42.5	22.2
No-load voltage (V)	56	60	65
Output current adjusting range (A)	20 ~ 160	30 ~ 250	40 ~ 400
Duty cycle (40°C)	35%	60%	60%
Efficiency	85%	85%	85%
Insulation grade	F	F	F
Case protection grade	IP21	IP21	IP21
Cooling	Wind	Wind	Wind
Dimensions (mm)	355 × 150 × 265	417 × 165 × 290	535 × 270 × 470
Net weight (kg)	4.5	9.2	20

DC TIG/MMA Welding Machine



Standard outfits



WS-200S



Accessories	Code	WS-200S
Fast plug black (2 pcs)	7509000160	●
WP-26 TIG torch	785Z026031	●
25mm ² Earth wire (2m)	7710000250	●
300A Earth clamp	7858030000	●

● stand for available



Carbon steel TIG current: 130A

Technical Specifications

Model	WS-200S						
Rated input voltage (V)	Single phase 220V 50 ~ 60Hz	Output current adjusting range (A)	TIG: 10 ~ 200 MMA: 10 ~ 160	Insulation grade	F	Dimensions (mm)	380 × 155 × 290
Rated input current (A)	15.6	Duty cycle (40°C)	35%	Case protection grade	IP21	Net weight (kg)	6.5
No-load voltage (V)	56	Efficiency	85%	Cooling	Wind		

Semi-Automatic Gas Shielded Welding Machine



Standard outfits



NB-250S



Accessories	Code	NB-250S
Fast plug black (2 pcs)	7503550010	●

● stand for available



Carbon steel MIG
Current: 180A Voltage: 21V

Technical Specifications

Model	NB-250S						
Rated input voltage (V)	Single phase 220V 50 ~ 60Hz	Output current adjusting range (A)	MIG: 40 ~ 250 MMA: 40 ~ 200	Insulation grade	F	Dimensions (mm)	870 × 430 × 685
Rated input current (A)	37.6	Duty cycle (40°C)	60%	Case protection grade	IP21	Net weight (kg)	34
No-load voltage (V)	56	Efficiency	85%	Cooling	Wind		

Semi-Automatic Gas Shielded Welding Machine



Standard outfits

Accessories	Code	A150-200Y	A150-250Y
Welding torch MB15KD	7852050032	●	●
35mm ² Earth cable 4 meter	7710000350	●	●
400A Earth clamp	7858040000	●	●
Fast plug (DKJ35-50) (red)	7500050021	●	●
Fast plug (DKJ35-50) (black)	7500050020	●	●
Plug for flow meter	7356000001	●	●

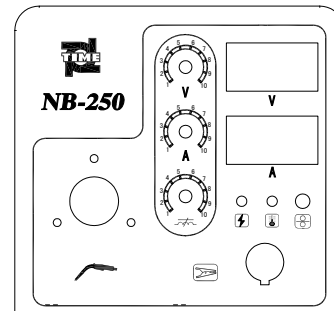
● stand for available



NB-200



NB-250



Carbon steel MIG
Current: 180A Voltage: 21V

Technical Specifications

Model	NB-200	NB-250
Company type	A150-200Y	A150-250Y
Rated input voltage	single phase 220V ± 15% 50~60Hz	3 phase 380V ± 15% 50~60Hz
Rated input current (A)	29	14
Rated input power (kW)	4.3	6.6
Voltage adjusting range (V)	15 ~ 26	15 ~ 29
No-load voltage (V)	50	50
Current adjusting range (A)	50 ~ 200	50 ~ 250
Wire feed rate range (m/min)	15 ~ 16	18 ~ 20
Suitable welding wire Dia. (mm)	Φ 0.8/Φ 1.0 (steel)	Φ 0.8/Φ 1.0 (steel)
Suitable welding wire type	solid	solid
Duty cycle	60%	60%
Efficiency (η)	90%	90%
Power factor (cos Φ)	0.93	0.93
Insulation grade	F	F
Case protection grade	IP21S	IP21S
Dimensions (mm)	500 × 273 × 500	500 × 273 × 500
Power source net weight (kg)	24	27
Description	The wire feeder is built-in.	The wire feeder is built-in.

TIME

WELDING MACHINE

Digital intelligent Welding Machine

Features:

- Three-core whole-digital control technology (human-machine interface, motor control, process control)
- Excellent process performance, user experience improved
- Universal data transfer interface, easy to expand peripheral functions and upgrade program by USB interface
- Digital management of welding at site

Application:

- Best choice for the welding workshop of large industrial customers
- Essential equipment for intelligent welding plant
- For automatic welding equipment and arc welding robot products

Intelligent welder

Perfect experience

TIME

WELDING MACHINE

TD Series Whole Digital Welding Machine

Suitable for welding various of metals except for Al, Mg and its alloys

TD

Main features

A kind of intelligent power source (new model) with whole digital microprocessor control, bases on the digital platform of DSP (hardware main control circuit) and ARM (digital communication panel). It adopts modular design concept and with characteristics of digital, intelligent, automation, network and green to provide a new experience for the user. The welding machine can be upgraded conveniently and add new functions by software without the hardware change.

- JOB mode
- Fault self-diagnosis
- Extensible ports for automatic welding
- Group control
- Trolley optional

Selection Tip

TDW 4000/5000

TDW 3000MB/4000M/5000M/6000M

TDN 3500 5000 6000

TDN 3500B/Y 5000B/Y 6000B/Y

TDN 5000M/5000MB

TDN 3501M/5001M

Welding Process Management (TWPM)

Intelligent digital TIG welding machine

Intelligent digital pulse TIG welding machine

Intelligent digital MIG/MAG welding machine

Intelligent digital MIG/MAG welding machine

Intelligent digital pulse MIG/MAG welding machine

Intelligent digital pulse MIG/MAG welding machine

Welding management software system

TDW DC TIG/MMA Welding Machine

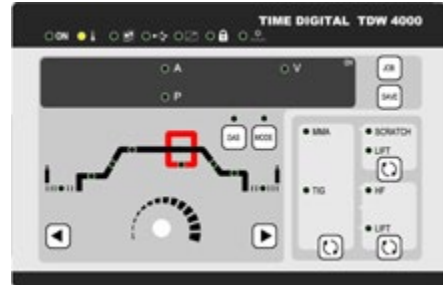


Main features

- MMA, TIG, Pulse TIG
- 5A arc ignition and welding stably
- HF ignition and Lift arc ignition
- Dual-core digital control
- 10 kinds of welding operation mode
- Remote control



TDW 4000



Welding current:
I peak = 220A
I base = 50A



Welding current: I = 130A

Technical Specifications

Model	DC TIG/MMA	TDW 4000	TDW 5000	
	DC Pulse TIG/MMA	TDW 4000M	TDW 5000M	TDW 6000M
Rated input voltage (V)	3 phase 380V ± 15% 50 ~ 60Hz			
Rated input current (I _{1eff}) (A)		22.0	34.9	43.5
Rated input power (kW)		17	23.5	33
Rated output capacity (X=60%)	MMA	400A/36V	500A/40V	630A/44V
	TIG	400A/26V	500A/30V	630A/34V
Rated no-load voltage (V)	76 ± 5%			
Rated no-load current (A)	< 1			
Energy efficiency rating	Grade 2			
Cycle	10			
Power factor (COS φ)	≥ 0.85			
Efficiency (η)	≥ 85%			
Insulation grade	F			
Case protection grade	IP23S			
Rated duty cycle	60%			
MMA	Arc striking current (A)	0 ~ 400	0 ~ 500	0 ~ 630
	Arc force (A/ms)		0 ~ 150	
	Welding current (A)	10 ~ 400	10 ~ 500	50 ~ 630
	Arc striking time (s)		0.1 ~ 2	
TIG	Welding current (A)	5 ~ 400	5 ~ 500	20 ~ 630
	Initial current (A)	5 ~ 400	5 ~ 500	20 ~ 630
	Maintain current (A)	5 ~ 400	5 ~ 500	20 ~ 630
	Secondary current (A)	5 ~ 400	5 ~ 500	20 ~ 630
	Slope up time (s)		0 ~ 10	
	Slope down time (s)		0 ~ 10	
	Pre-flow time (s)		0 ~ 10	
	Post-flow time (s)		0 ~ 25	
	TIG spot welding time		0.1 ~ 25	
	Spot welding current (A)	5 ~ 400	5 ~ 500	20 ~ 630
	Peak current (A)	5 ~ 400	5 ~ 500	20 ~ 630
	Base current (A)	5 ~ 400	5 ~ 500	20 ~ 630
	Pulse frequency (Hz)		0.1 ~ 500	
	Pulse duty cycle		0.1 ~ 99%	
Dimensions (L x W x H) (mm)		610 x 290 x 503	650 x 320 x 567	650 x 340 x 614
Net weight (kg)		33	47	58

TDW Pulse TIG Welding Machine



Main Features

- Digital setting for precise control, current is adjusted in units of 1A, 12 welding parameters can be accurately set to achieve high quality welding
- TIG welding 5A arc ignition, stable welding, arc concentration reached the international advanced level
- MMA, DC TIG, pulse TIG, TIG spot welding for multi-purpose
- MMA welding can be set as low no-load output, scratch TIG available
- Two kinds of arc-ignition methods: HF and lifting TIG
- With line energy monitoring related functions, USB interface is reserved to export data
- 3 welding modes available, the welding sequence can be adjusted according to user needs to adapt to welder operating habits and process requirements
- Suitable for the industries of nuclear power, chemical construction, thermal power
- Small size, light weight, easy to carry



TDW 3000MB



Stainless steel Pulse TIG
Base current: 50A Peak current: 100A



Stainless steel Pulse TIG
Base current: 12A Peak current: 25A

Technical Specifications

Model		TDW 3000MB		
Rated input voltage (V)		3 phase 380V ± 15% 50 ~ 60Hz		
Rated input current (A)		11		
Rated output capacity	MMA 30%	300A / 32V		
	TIG 35%	300A / 22V		
Rated no-load voltage (V)		76 ± 5%		
Low no-load voltage (V)		24 ± 5%		
Rated no-load current (A)		< 1		
Energy efficiency rating		Grade 2		
Power factor		0.85		
Efficiency		90%		
Duty cycle (40°C) MMA		30%		
Duty cycle (40°C) TIG		35%		
Insulation grade		F		
Case protection grade		IP23S		
Dimensions (mm)		560 × 249 × 423		
Net weight (kg)		24		
MMA	Ignition current (A)	0 ~ 300		
	Arc force (A/ms)	0 ~ 150		
	Welding current (A)	10 ~ 300		
	Arc striking time (s)	0.1 ~ 2		
	Arc length adjusting range (V)	35 ~ 80		
TIG	Welding current (A)	5 ~ 300		
	Initial current (A)	5 ~ 300		
	Maintain current (A)	5 ~ 300		
	Secondary current (A)	5 ~ 300		
	Slope up time (s)	0 ~ 10		
	Slope down time (s)	0 ~ 10		
	Pre-flow time (s)	0 ~ 10		
	Post-flow time (s)	0 ~ 25		
	TIG spot time (s)	0.1 ~ 25		
	Spot welding current (A)	5 ~ 300		
	Peak current (A)	5 ~ 300		
	Base current (A)	5 ~ 300		
Pulse frequency (Hz)	0.1 ~ 500			
Pulse duty cycle	0.1 ~ 99%			

TDN Gas Shielded Welding Machine



Main features

- MIG/MAG,MMA
- Digital control panel, friendly HMI
- Welding expert system, synergic adjustment
- 20 sets welding parameters can be stored
- Welding processing can be customized
- Modular designing, easy for updating
- Automation interface available
- Intelligent fault detection



TDN 3500

(optional)



Carbon steel I=135A
V=19.5V

Technical Specifications

Model	TDN 3500	TDN 5000	TDN 6000
Input voltage	3 phase AC 380V ± 15% 50/60Hz		
Rated input current (A)	26.3	34.9	43.5
Rated input power (kW)	17.3	23	28.6
No-load voltage (V)	76		
No-load current (A)	0.7~0.9		
No-load consumption (W)	300	300	350
Voltage range (V)	10~40	10~45	10~50
Current output range (A)	30~350	30~500	30~630
Spot welding time	0 ~ 10.0		
Pre-flow time	0 ~ 10.0		
Post-flow time	0 ~ 10.0		
Type of wire	Solid/flux cored carbon steel and stainless steel		
Wire diameter	Φ 0.8/Φ 1.0/Φ 1.2	Φ 1.0/Φ 1.2/Φ 1.4/Φ 1.6	Φ 1.0/Φ 1.2/Φ 1.4/Φ 1.6
Gas type	CO ₂ : 100%, Ar (80%)+CO ₂ (20%), Ar (98%)+CO ₂ (2%)		
Duty cycle	60% (350A, 31.5V) 100% (270A, 27.5V)	60% (500A, 39V) 100% (390A, 33.5V)	60% (630A, 44V) 100% (500A, 39V)
Energy efficiency	Grade 2		
Case protection class	IP21S		
Insulation grade	F		
Cooling method	Thermostat air cooling		
Dimension (mm)	603 × 290 × 503	660 × 326 × 567	598 × 336 × 613
Weight (kg)	35	48	60
Weight of wire feeder (kg)	11	11	11
Remark	TDN 5000K: Input power 3 phase 220V/440V is optional		

TDN B/Y Gas Shielded Welding Machine



Main features

- Welding expert system, synergic adjustment
- The multi stage welding current curve control can control the heat input during the welding process and reduce the welding spatter
- Unique short arc length control technology improves the droplet transfer frequency of small and medium current and reduce the heat input of base metal, so as to realize the high speed welding of thin plate
- Welding processing can be customized



TDN 3500Y



Carbon steel I=135A
V=19.5V

Technical Specifications

Model	TDN 3500 (B/Y)*	TDN 5000 (B/Y)*	TDN 6000 (B/Y)*
Input voltage	3 phase AC 380V ± 15% 50/60Hz		
Rated input current (A)	26.3	34.9	53.3
Rated input power (kW)	17.3	23	35
No-load voltage (V)	76		
No-load current (A)	0.7~0.9		
No-load consumption (W)	300	300	350
Voltage adjustment range (V)	10~40	10~45	10~50
Current output range (A)	30~350	30~500	30~630
Spot welding time	0 ~ 10.0		
Pre-flow time	0 ~ 10.0		
Post-flow time	0 ~ 10.0		
Welding wire type	Solid/flux cored carbon steel and stainless steel		
Wire diameter	Φ0.8/Φ1.0/Φ1.2	Φ1.0/Φ1.2/Φ1.4/Φ1.6	Φ1.0/Φ1.2/Φ1.4/Φ1.6
Gas type	CO ₂ : 100%, Ar (80%)+ CO ₂ (20%), Ar (98%)+ CO ₂ (2%)		
Duty cycle	60% (350A, 31.5V) 100% (270A, 27.5V)	60% (500A, 39V) 100% (390A, 33.5V)	60% (630A, 44V) 100% (500A, 39V)
Energy efficiency	Grade-2		
Case protection grade	IP21S		
Insulation grade	F		
Cooling method	Thermostat air cooling		
Dimension (mm)	603 × 290 × 503	660 × 326 × 567	598 × 336 × 613
Weight of power source (kg)	35	48	60
Weight of wire feeder (kg)	11	11	11
Weight of water cooler (kg)	21	21	21
Weight of trolley (kg)	15	15	15

Note: B TYPE for LCD Y TYPE for integrated machine including water cooler and trolley.

TDN Pulse MIG/MAG Welding Machine



Main features

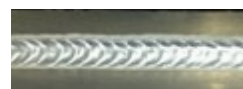
- Advanced whole digital DSP control technology
- Compatible with TWPM
- Interface for automatic welding equipment and robot available
- Pulse MAG/MIG/ MMA/DC TIG (contact arc ignition)
- Welding expert system and expert database can be customized
- Multi protections like under/over voltage, under/over current, etc
- Multi channel memory function



TDN 5000M



Stainless steel I =140A V=21.5V



Aluminum I=160A V=23.8V



TFN 6002F (optional)

- LCD Display control
- For Euro welding torch
- Enclosed wire spool
- Data exchange quickly and reliable
- Communication with power source through CAN Bus

Technical Specifications

Model	TDN 5000M
Input voltage	3 phase AC 380V ± 15% 50-60Hz
Rated input current (A)	37.9
Rated input power (kW)	24.9
No load voltage (V)	76
No load current (A)	0.7-0.9
No load consumption (W)	300
Voltage range (V)	10-45
Current output range (A)	30-500
Current output range for MMA (A)	30-500
Type of wire	Solid wire
Wire diameter	Φ 1.0/Φ 1.2/Φ 1.6

Material of wire	carbon steel, stainless steel, Al, Al alloy
Welding mode	MMA, Pulse MIG, MAG, Scratch TIG
Duty cycle	60% (500A, 39V)
Efficiency (η)	80%-85%
Power factor	λ = 0.7- 0.9
Case protection grade	IP21S
Insulation grade	F
Cooling method	Thermostat air cooling
Dimension of power source (mm)	660 × 326 × 567
Dimension of wire feeder (mm)	670 × 240 × 405
Weight of power source (kg)	50
Weight of wire feeder (kg)	11

TDN Double Pulse MIG/MAG Welding Machine

Main features

- Advanced whole digital DSP control technology. The machine can be upgraded by software according to the user's requirements and monitor the welding process by computer
- The alternating of the double pulse current can effectively stir the molten pool to avoid the generation of gas hoses and at the same time make the welding seam naturally form beautiful fish scales
- The double pulse peak energy melts the base metal and the welding wire, and the base energy cooling molten pool to effectively prevent the base material from burning through and improve the welding seam joint ability
- The pulsation frequency, pulsation amplitude, peak ratio, peak arc length correction and base arc length correction constitute all the adjustment parameters of the double pulse to get wider range of process applications
- Interface for automatic welding equipment and arc welding robot is available
- Pulse MAG/MIG/ MMA/DC TIG (contact arc ignition)
- Welding expert system for various materials is stored in the welding machine for welding structural steel, carbon steel, stainless steel, duplex stainless steel, nickel based alloy, aluminum, aluminum alloy and other special materials, and expert database can be customized according to user requirements
- The welding torch has two ways water-cooling system to cool the contact tip and nozzle, and duty cycle of the torch is 100%
- Undervoltage, over voltage, under current and over current protection function to ensure stability and reliability of the machine.
- Multi channel memory function



TDN 5000MB



Stainless steel Pulse MIG
Current: 190A Voltage: 23.8V



Aluminum-magnesium alloy Pulse MIG
Current: 180A Voltage: 23.2V



Technical Specifications

Model	TDN 5000MB
Input voltage (V)	3 phase 380V ± 15% 50~60Hz
Rated input current (A)	37.9
Rated input power (kW)	24.9
No-load voltage (V)	76
No-load current (A)	0.7 ~ 0.9
No-load loss (W)	300
Voltage range (V)	10 ~ 45
Current output range (A)	30 ~ 500
MMA welding current range (A)	30 ~ 500
Wire type	Solid wire
Wire diameter (mm)	Φ 1.0/Φ 1.2/Φ 1.6

Wire material	carbon steel, stainless steel, Al, Al alloy
Welding method	MMA, double pulse MAG, MIG, Scratch TIG
Duty cycle (40°C)	60% (500A, 39V)
Efficiency	80% ~ 85% (rated conditions)
Power factor	λ = 0.7 ~ 0.9
Case protection grade	IP21S
Insulation grade	F
Cooling method	Thermostat air cooling
Dimensions of power source (L × W × H)	660 × 326 × 567mm (Weight : 50kg)
Dimensions of wire feeder (L × W × H)	670 × 240 × 405mm (Weight : 11kg)
Dimensions of water-cooler (L × W × H)	675 × 320 × 252mm (Weight : 21kg)

TDN Pulse MIG/MAG Welding Machine



Main features

- DSP digital processor inverter technology
- Professional welding expert system
- Upgraded via software
- Welding parameters can be adjusted through the JOB interface
- Function: MAG/MIG, pulse MAG/MIG, MMA, scratch TIG
- Mode of operation: 2 steps / 4 steps / initial 4 steps / spot welding
- Digital display: wire feed speed, current, voltage, welding materials, etc
- Applicable for: carbon steel, stainless steel, aluminum magnesium and its alloys, other special materials
- Over current protection, over voltage protection, over heat protection and other protect functions



TDN 3501M / 5001M



Aluminum–magnesium alloy Pulse MIG
Current: 120A ~ 140A Voltage: 18V ~ 20.5V



Aluminum–magnesium alloy Pulse MIG
Current: 190A ~ 210A Voltage: 21V ~ 23V



Technical Specifications

Model	TDN 3501M	TDN 5001M
Input voltage	3 phase AC380V ± 15%, 50~60Hz	
Rated input current (A)	23.7	37.9
Rated input power (kW)	15.6	24.9
No-load voltage (V)	76	76
No-load current (A)	0.7~0.9	0.7~0.9
No-load consumption PL (W)	300	300
Voltage adjustable range (V)	10~40	10~45
Current output range (A)	30~350	30~500
Current adjustable range (MMA) (A)	30~350	30~500
Suitable welding wire type	Solid/Flux–cored welding wire	
Suitable welding wire dia. (mm)	Φ 0.8/Φ 1.0/Φ 1.2/Φ 1.6	
Suitable welding wire material	Carbon Steel, stainless steel, Al, Al alloy	
Welding methods	Pulsed MIG, Pulsed MAG, MAG, CO ₂ , MMA (scratch TIG)	
Duty cycle	60% (350A, 34V)	60% (500A, 40V)
Efficiency (η)	80%~90% (Rated output conditions)	
Power factor (λ)	0.7~ 0.9	
Case protection grade	IP21S	
Insulation grade (Y)	F	
Cooling method	Thermal control wind cooling	
Power source dimensions (L × W × H) (mm)	603 × 290 × 503	660 × 326 × 567
Weight of power source (kg)	35	50

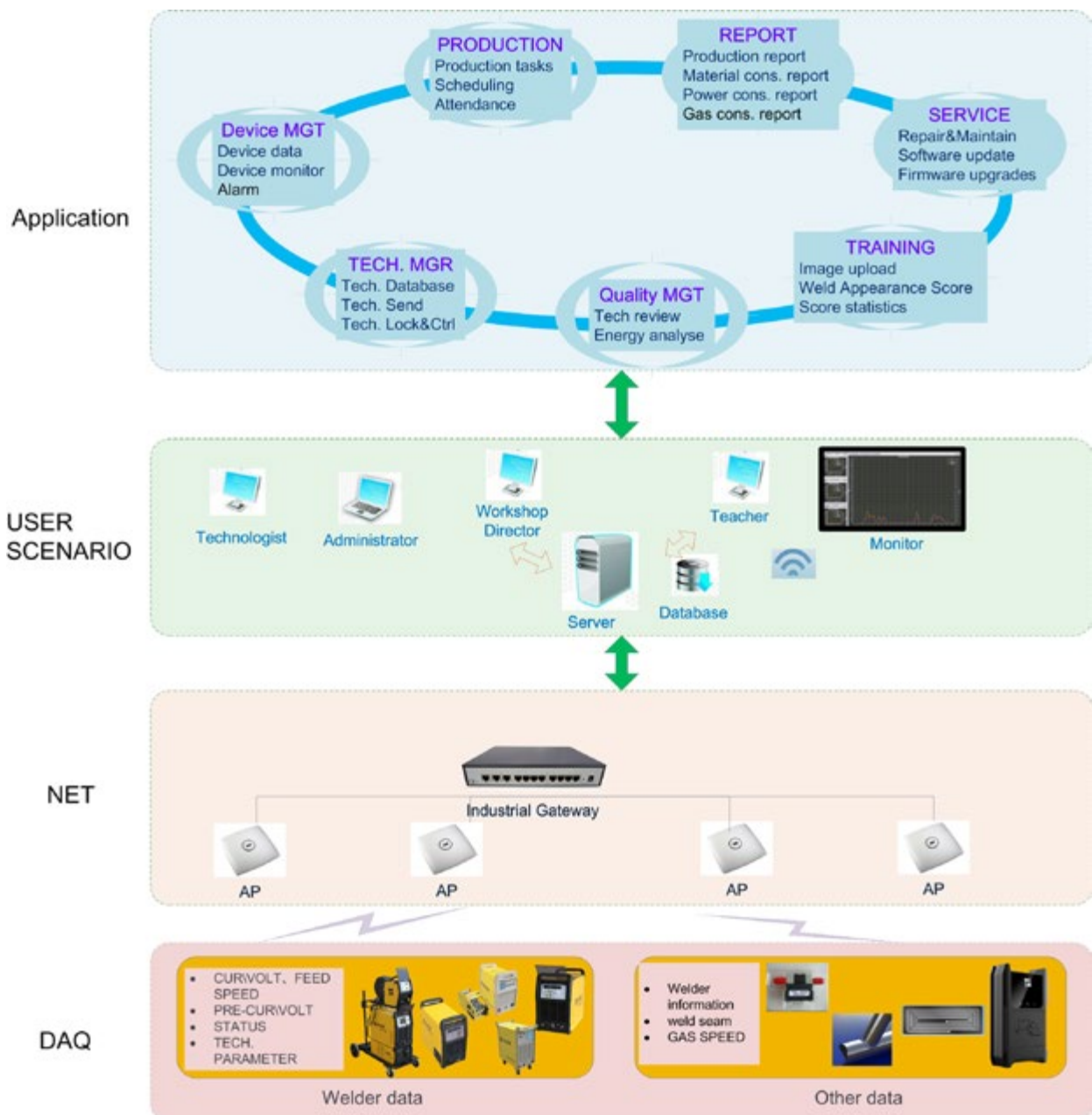
TWPM Welding Production Management System



Features

Industrial equipment digital and information network is no longer a new topic. Network has come in the industry. The digital, network and intelligent TIME welding machine is no longer a mere production machine, but part of digital welding site, to provide a new management tool for welding production manager, manager of welding processes, welding equipment managers via acquisition, statistics and analysis of data during welding.

TWPM (TIME Welding Production Management) combines internet of Things technology and production management technology, providing an effective solution for production management, quality management, cost management, equipment management, etc.



TWPM Welding Production Management System

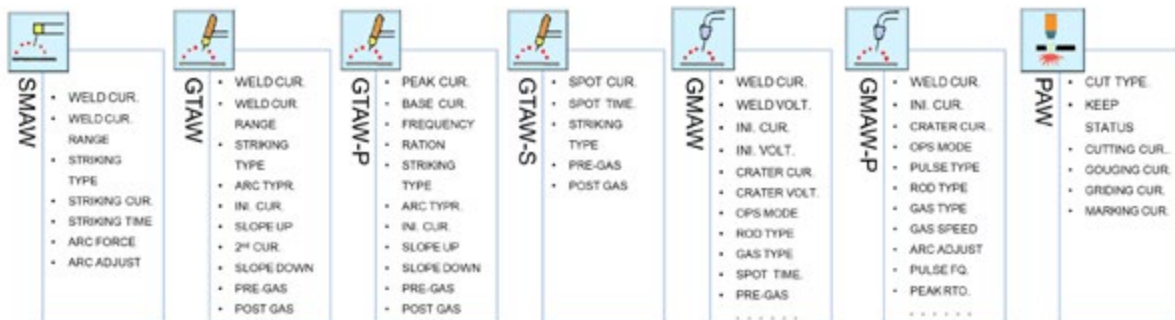


Technical characteristics

- Fully own independent intellectual property rights:
TWPM software, TWPM_WEB software, welder remote upgrade software, etc.
- Welding status is clear:
It can view the working status, fault status and real-time process parameters of all equipment in real time, realizing remote monitoring and management.



- Professional welding process management:
Process parameters of MMA, DC TIG welding, pulse TIG, TIG spot welding, MIG/MAG welding, pulse MIG/MAG welding, submerged arc welding, plasma cutting can be set. Equipment process fine-tuning range can be controlled by the lock function of panel to prevent the welder from using excessive current. It can realize the operation of issuing multi-channel process parameters and batch processing.



TWPM Welding Production Management System

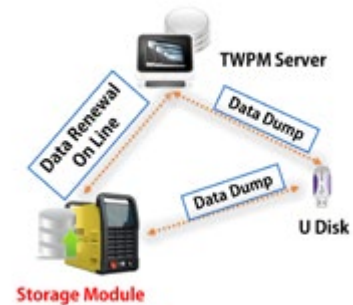


- **Welding training information management:**

The welding training is first incorporated into the management system, providing functions such as welding training course management, student attendance management, welding training examination management, standardized weld appearance rating management, and student achievement statistics, etc.

- **Offline data storage management:**

When the welding machine is offline, it can store up to 1000 hours of offline data. The offline data can be imported into the TWPM system through network or USB disk to ensure complete and reliable weld process data.



- **Non-digital welding machine centralized control management:**

Real-time current and voltage parameters of non-digital welding machine can be collected by installing TIME data exchange controller then connect it into the TWPM system for management.



Applicable model

Type	TIME model	Other Brand Model
MMA	PE61-400	Rated current less than 630A
TIG	TDW 4000, TDW 5000, TDW 6000, PNE61-400, PNE61-500	
Pulse TIG	TDW 4000M, TDW 5000M, TDW 6000M, TDW 4000MB, TDW 5000MB, TDW 6000MB, TDW 4000MC, TDW 5000MC, TDW 6000MC, PNE61-400P	
MIG/MAG	TDN 3500, TDN5000, TDN 5001, TDN 6000, TDN 3500B, TDN 5000B, TDN 6000B, TDN 3500C, TDN 5000C, TDN 6000C, A160-350W, A160-500W,	
Pulse MIG/MAG	TDN 3501MB, TDN5000MB, TDN 5001MB	
SAW	A311-1000	Rated current less than 1250A
PAC	TDL 600, TDL 800, TDL 1000, TDL 1200	Rated current less than 200A

TIME

WELDING MACHINE

Auto-Welding and CNC Cutting Equipment

This series of products is auxiliary welding equipment which outfits with welding power source for all position welding processing of large workpieces.

The series of products are widely used in the industrial field of wind power, steel structure, pressure vessels, boilers, piping, vessels, surfacing and so on.

Main features

Suitable for cut and weld of many kinds of metal material

Humanized design, safety protection facilities

Convenient operation, accurate control, high degree of automation

Welding quality stable, accurate positioning, high reliability

Smooth transmission, low noise, welding and cutting high precision

Reasonable design, integration and good rigidity

Large capacity, action is accurate, wide range of speed regulation, high production efficiency

Whole solutions from the sheet cutting to the product pairing and welding can be realized

The equipments can be customized according to user's requirement

Selection Tip

TZ Series Manipulator

Automatic welding manipulator can realize the automatic welding

TR1 Series Rotator

Self aligning welding rotator for group workpiece welding.

TR2 Series Rotator

Adjustable welding rotator for group workpiece welding.

TB1 Series Positioner

Welding positioner can adjust the welding position easily

ZF Series Welding machine

Longitudinal seam automatic welding machine can achieve the straight seam welding with high quality and low deformation

TDC I TDC II TDCIV
CNC cutting machine

Automatic CNC cutting machine is good tool for the metal sheet cutting in the field of industry

TZ Series Automatic Welding Manipulator

Main features

- Built in remote control interface, TIME manipulators can set up automatic welding center with TIME rotator, positioner and other auxiliary equipments.
- Modular structure, flexible configuration. Compatible with welding heads from different factories.
- Boom extension, trolley moving and column rotation adopt AC variable frequency speed regulation technology.
- The control cabinet and operator pendant can be switched to each other, convenient for operators.
- Welding oscillator, welding seam tracker and industrial monitor and so on are optional.
- Internal arm extension, double hanging brackets, manned platform, flux feeding and recovery system and fume extractors (open arc) etc. are optional.



Technical Specifications

Boom lifting stroke (m)	2	3	4	5	6	7	8
Boom lifting speed (mm/min)	950						
Boom extension stroke (m)	2 ~ 4	2 ~ 6	3 ~ 7	3 ~ 8	3 ~ 8	3 ~ 8	4 ~ 8
Boom extension speed (mm/min)	100 ~ 1000 (VVVF)						
Maximum load capacity on boom end (kg)	150						
Rotating angle of column (°)	± 180						
Rotating speed of column (r/min)	0.02 ~ 0.2 (VVVF)						
Column locking mode	Mechanical lock or Pneumatic lock						
Trolley moving speed (mm/min)	250 ~ 2500 (VVVF)						
Center distance of rail (mm)	P43/2000 (P43/2500 is used for 8 × 8 manipulator)						

Note: The above parameters are for TIME standard product configurations, and can be customized according to the customer's requirements.

TR1 Series Self Aligning Welding Rotator

Main features

- Automatic adjustment of roll swing angle.
- Gear meshing transmission, stable operation.
- Variable frequency stepless speed regulation, large starting torque.
- Remote control by operator pendant, simple and reliable.
- Electric linkage interface reserved for automatic welding, convenient for application.
- Electric travelling module and mechanical anti floating device are optional.
- Rotating conductive device is optional for steel roller.
- Wire operator pendant/wireless operator pendant are optional.
- Flexible configuration of power roller and idle roller.



Technical Specifications

Model	Load capacity (T)	Roller linear speed (mm/min)	Diameter of workpiece (mm)	Motor power (kW)	Roller dimension (D × W)/mm
TR1-5T	5	100 ~ 1000	350 ~ 2500	1 × 0.25	φ 250 × 120 (PU roller)
TR1-10T	10		350 ~ 2500	2 × 0.25	φ 250 × 120 (PU roller)
TR1-20T	20		600 ~ 4000	2 × 0.37	φ 300 × 140 (PU roller)
TR1-30T	30		600 ~ 4500	2 × 0.37	φ 350 × 180 (PU roller)
TR1-40T	40		600 ~ 4500	2 × 0.55	φ 400 × 160 (PU roller)
TR1-50T	50		750 ~ 5000	2 × 0.75	φ 400 × 180 (PU roller)
TR1-60T	60		800 ~ 5000	2 × 0.75	φ 400 × 200 (PU roller)
TR1-80T	80		900 ~ 5500	2 × 1.1	φ 500 × 200 (PU roller)
TR1-100T	100		900 ~ 5500	2 × 1.5	φ 500 × 240 (PU roller)
TR1-150T	150		1000 ~ 6300	2 × 2.2	φ 550 × 320 (PU roller)

Note: The above parameters are for TIME standard product configurations, and can be customized according to the customer's requirements.

TR2 Series Adjustable Welding Rotator

Main features

- Center distance can be adjusted by reserved screw holes.
- Variable frequency stepless speed regulation, large starting torque.
- Remote control by operator pendant, simple and reliable.
- Linkage interface reserved for automatic welding, convenient for application.
- Electric traveling module and mechanical anti floating device are optional.
- Rotating conductive device is optional for steel roller.
- Wire operator pendant / wireless operator pendant are optional.
- Flexible configuration of power roller and idle roller.



Technical Specifications

Model	Load capacity (T)	Roller linear speed (mm/min)	Diameter of workpiece (mm)	Motor power (kW)	Roller dimension (D × W) / mm
TR2-5T	5	100 ~ 1000	250 ~ 1800	1 × 0.25	φ 250 × 120 (PU roller)
TR2-10T	10		300 ~ 3000	2 × 0.25	φ 250 × 120 (PU roller)
TR2-20T	20		350 ~ 3600	2 × 0.37	φ 300 × 180 (PU roller)
TR2-30T	30		600 ~ 4200	2 × 0.55	φ 350 × 200 (PU roller)
TR2-40T	40		600 ~ 4200	2 × 0.55	φ 400 × 220 (PU roller)
TR2-50T	50		850 ~ 5000	2 × 0.75	φ 450 × 280 (PU roller)
TR2-60T	60		850 ~ 5000	2 × 0.75	φ 450 × 280 (PU roller)
TR2-80T	80		850 ~ 5000	2 × 1.1	2 × φ 550 × 160 (PU roller)
TR2-100T	100		1000 ~ 5500	2 × 1.5	2 × φ 550 × 180 (PU roller)
TR2-150T	150		1000 ~ 6000	2 × 2.2	φ 620 × 240 (PU roller)
TR2-200T	200		1000 ~ 6500	2 × 4.0	φ 650 × 250 (Steel roller)
TR2-300T	300		1000 ~ 6500	2 × 5.5	φ 700 × 300 (Steel roller)
TR2-400T	400		1000 ~ 6500	2 × 7.5	φ 800 × 300 (Steel roller)
TR2-600T	600		1000 ~ 7000	2 × 11.0	φ 800 × 350 (Steel roller)

Note: The above parameters are for TIME standard product configurations, and can be customized according to the customer's requirements.

TB Series Welding Positioner

Main features

- DC speed regulation, manual turning for load capacity less than 300kg.
- Variable frequency speed regulation, electric turning for load capacity over than 300kg.
- Linkage interface reserved, convenient for use.
- Remote control by operator pendant, simple and reliable.
- Friction conductive device with elastic compensation function.
- Chuck, cooling system, etc are optional.



Technical Specifications

Model	Load capacity (kg)	Rotating speed (r/min)	Turning speed (r/min)	Turning angle (°)	Max load eccentricity (mm)	Max load gravity (mm)	Diameter of work table (mm)	Rotating motor power (kW)	Turning motor power (kW)
TB1-01	10/5	2 ~ 10	--	0 ~ 90	--	--	180	0.015	Manual
TB1-05	50/25	1-7/2 ~ 15	--	0 ~ 90	--	--	315	0.08	Manual
TB1-1	100/50	1-7/2 ~ 15	--	0 ~ 90	--	--	345	0.12	Manual
TB1-3	300/150	0.3 ~ 2.5	--	0 ~ 90	150	--	450	0.2	Manual
TB1-5	500	0.2 ~ 1.8	0.5	0 ~ 90	150	150	650	0.37	0.55
TB1-6	600	0.1 ~ 1	0.73	0 ~ 120	150	200	800	0.37	0.37
TB1-12	1200	0.09 ~ 0.9	0.35	0 ~ 120	200	250	1100	1.5	0.75
TB1-20	2000	0.09 ~ 0.9	0.36	0 ~ 120	200	300	1200	1.1	1.5
TB1-30	3000	0.06 ~ 0.6	0.27	0 ~ 120	200	300	1300	1.5	2.2
TB1-40	4000	0.06 ~ 0.6	0.24	0 ~ 120	200	300	1400	1.5	2.2
TB1-50	5000	0.05 ~ 0.5	0.24	0 ~ 120	200	300	1600	2.2	3.0
TB1-80	8000	0.05 ~ 0.5	0.25	0 ~ 120	200	350	1800	3.0	4.0
TB1-100	10000	0.05 ~ 0.5	0.24	0 ~ 120	200	400	2000	4.0	5.5
TB1-150	15000	0.02 ~ 0.2	0.15	0 ~ 90	200	500	2200	4.0	7.5
TB1-200	20000	0.04 ~ 0.4	0.15	-45 ~ 90	200	500	2500	2 × 2.2	2 × 3.0
TB1-250	25000	0.04 ~ 0.4	0.15	-45 ~ 90	200	500	3000	2 × 3.0	2 × 5.5
TB1-500	50000	0.02 ~ 0.2	0.15	-45 ~ 90	200	500	5000	2 × 7.5	2 × 11.0

Note: The above parameters are for TIME standard product configurations, and can be customized according to the customer's requirements.

● Intelligent Welding Production Management System

Basic function:

Solve the problem in traditional welding industries (boiler, pressure vessel, engineering machinery, and steel structure, etc) like difficult collection of welding process data, low efficiency of welding production management process, difficult to control welding quality, and lack of decision-making and analysis basis for welding production and so on.

Purpose:

- Through monitoring and management of the welding site remotely to control the production of the whole workshop in real time.
- Remote control of the welding parameters. Parameters can be sent, stored and modified remotely to control the welding quality of key parts effectively.
- Traceability of historical welding parameters. Production information of each welding bead, including welding line energy, groove information, welding seam tracking information and welding seam image of different welding position can be analyzed.
- Management of equipment and staffs. In charge of the operation of each welding machine in real time can reasonably distributes welding machine resources, which is convenient for maintenance and repair. Comprehensive assessment of workers can be achieved through the attendance system, switching time, effective welding time, welding parameter fluctuations and other indicators.

Technical methods

Perfect combination of welding equipment and industrial internet. It provides users with production management and after-sales service and other related help to improve the quality and efficiency through equipment data monitoring and friendly human-computer interface.

- Each automatic welding and cutting equipment is equipped with high-performance PLC of network interface.
- The fixed work station adopts data exchange controller and the portable equipment adopts wireless transmitter to form a distributed control network.
- Industrial computer for data collection and storage system, equipped with industrial liquid crystal display, using WINCC configuration software.
- It can connect 128 sets of automatic welding and cutting equipment, and share 50 sets of welding parameters.



Gas stove industry

CNC Cutting Machine

TDC | type CNC cutting machine

Main features

- The longitude rail is 23kg class rail. Latitude track is linear rail.
- AC servo driving, transmission adopts precision planetary gear reducer.
- Gantry frame structure beam, dual drive.
- Work with air/oxygen plasma cutting power source.
- Equipped with gas controller and gas distribution system. Function of automatic ignition, backfire arrest etc.



Technical Specifications

Track width (mm)	4000	4500	5000	5500
Effective cutting width (mm)	3300	3800	4300	4800
Overall width of machine (mm)	4700	5200	5700	6200
Effective cutting length (mm)	(Rail length -2500) / Can be customized			
CNC system	TIME I, Hypertherm EDGE Connect			
Optional plasma power source	TDL1200, Powermax105, Powermax125, MAXPro200A			
Number of torch	According to customer's requirements			
Lifting stroke of torch (mm)	200			
Un-load speed (mm/min)	10000			
Cutting speed (mm/min)	Flame: 50 ~ 750. Plasma: as per plasma power source			
Cutting thickness (mm)	Flame: 6 ~ 160. Plasma: as per plasma power source			
Fuel gas	Ethyne / Propane			
Base	I-beam / cement base (Standard configuration is I-beam base)			
Longitudinal chain	Up drag chain or down drag chain (Standard is down drag chain)			

Note: The above parameters are for TIME standard product configurations, and can be customized according to the customer's requirements.

CNC Cutting Machine

TDC II type CNC cutting machine

Main features

- The longitude rail is 43kg class heavy rail. Latitude track is linear rail.
- AC servo driving, transmission adopts precision planetary gear reducer.
- Heavy gantry frame structure beam, dual drive, suitable for workpiece with ultra width.
- Available with high power / definition plasma cutting power source.
- Thickness of flame cutting for carbon steel can be up to 300mm.
- Equipped with gas controller and gas distribution system. Function of auto ignition, backfire arrest etc.



Technical Specifications

Track width (mm)	4000	4500	5000	5500	6000	6500	7000
Effective cutting width (mm)	3200	3700	4200	4700	5200	5700	6200
Overall width of machine (mm)	4800	5300	5800	6300	6800	7300	7800
Effective cutting length (mm)	(Rail length – 2500) / Can be customized						
CNC system	TIME I, Hypertherm EDGE Connect						
Optional plasma power source	XPR170, XPR300, HPR400XD, HPR800XD						
Number of torch	According to customer's requirements						
Lifting stroke of torch (mm)	200 or 300						
Un-load speed (mm/min)	10000						
Cutting speed (mm/min)	Flame:50 ~ 750, Plasma:as per plasma power source						
Cutting thickness (mm)	Flame:6 ~ 160 or 6 ~ 300, Plasma:as per plasma power source						
Fuel gas	Ethyne, Natural gas, Propane						
Base	H-steel or cement base (Standard configuration is H-steel base)						
Longitudinal chain	Up drag chain or down drag chain (Standard is down drag chain)						

Note: The above parameters are for TIME standard product configurations, and can be customized according to the customer's requirements.

CNC Cutting Machine

TDC IV –A Unlimited rotary type CNC Cutting Machine

Main features

- Mainly used in shipbuilding, heavy duty pressure vessel and huge steel structure industry etc.
- Fixed angle and variable angle bevel of any geometric curve available.
- The longitude rail is 43kg class rail. Latitude track is linear rail.
- AC servo driving, transmission adopts precision planetary gear reducer.
- Heavy gantry frame structure beam, dual drive.
- Double anti-collision protection function of cutting torch.
- The rotary head adopts spatial linkage mechanism.



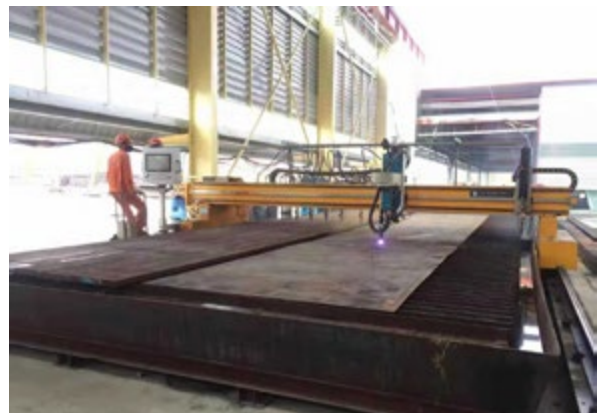
TDC IV – B bevel CNC cutting machine

Main features

- Economic CNC cutting machine for bevel cutting, mainly used in steel structure, pressure vessel , petrochemical and other industries.
- Electric adjustment of torch angle.The bevel angle can be preset.
- Anti-collision function of torch.
- Can work with XPR high definition plasma power source of Hypertherm, True Bevel technology.

Technical Specifications

- Axis: 5
- Torch lifting stroke: 300mm
- Torch deflection angle: $\pm 45^\circ$
- Torch deflection precision: $\pm 1^\circ$
- Vertical cutting error: $\pm 0.5\text{mm/m}$
- Bevel cutting error: $\pm 1\text{mm/m}$
- CNC system: EDGE Connect Hypertherm
- Nesting software: Hypertherm ProNest



TIME

WELDING MACHINE

TIME Arc Welding Robot System

Through continuous exploration and research, TIME arc welding robot system provides the users a comprehensive and professional arc welding robot solutions which rely on TIME company strong ability of design, research, manufacturing and services

Six Characteristics of TIME Industrial Robots

- The core components with independent intellectual property rights completely—TIME robot controller adopts the cost-effective IPC platform and Intime system to achieve teaching and playback of trajectory. Equipped with interface of high-speed industrial Ethernet, and RS485 and other fieldbus interface, TIME industrial robot has obvious advantages in the function expansion, servo selection, sensor matching and upgrade and so on.
- TIME industrial robots, positioner and digital welding machine set up an eight-axis robot system whose closed-loop control cycle is 200us to realize welding of complex seam.
- The robot main body is calibrated by the Dynalog robot performance test and evaluation system and the robot calibration system from US, which improves the accuracy and trajectory precision of the robot.
- TIME has strong ability of precision machining, heat treatment, casting, material aging testing on manufacturing and testing to ensure that TIME industrial robots with high quality, high precision and high reliability.
- TIME company has more than 20 years of welding equipment manufacturing and welding technology accumulation which combines with the perfect technology of TIME industrial robots to form the unique technical advantages of TIME arc welding robot system.
- TIME has the core technology of industrial robots to meet the user's customized requests of the robot control system, mechanical body, welding and cutting, the system integration and so on.

Equipped with welding power source

The TIME Arc welding robot system outfits with TIME welding power sources mainly. Some international-renowned brand of welding power sources can be work with TIME robots according to user needs.

TIME Arc Welding Robot System

TIME R6-1400 Welding Robot System



Item		Technical parameters
Degrees of freedom		6
Maximum load capacity		6kg
Repeat positioning accuracy		± 0.08mm
Maximum motion radius		1420mm
Drive mode		AC servo motor
Installation		On ground, side hanging or hoisting
Protection grade		IP54
Environmental conditions	Ambient temperature	0 ~ 45°C
	Relative humidity	20 ~ 80RH non-condensing
	Vibration	≤ 0.49g
	Others	Keep away from flammable or corrosive liquids
Power capacity		1.5KVA
Weight		160kg

TIME R20-1700 Welding Robot System

Item		Technical parameters
Degrees of freedom		6
Maximum load capacity		20kg
Repeat positioning accuracy		± 0.08mm
Maximum motion radius		1710mm
Drive mode		AC servo motor
Installation		On ground, side hanging or hoisting
Protection grade		IP54
Environmental conditions	Ambient temperature	0-45°C
	Relative humidity	20 ~ 80RH non-condensing
	Vibration	≤ 0.49g
	Others	Keep away from flammable or corrosive liquids
Power capacity		2KVA
Weight		280kg



TIME R80-2100 Welding Robot System



Item		Technical parameters
Degrees of freedom		6
Maximum load capacity		80kg
Repeat positioning accuracy		± 0.1mm
Maximum motion radius		2100mm
Drive mode		AC servo motor
Installation		On ground
Protection grade		IP67
Environmental conditions	Ambient temperature	0 ~ 45°C
	Relative humidity	20 ~ 80RH non-condensing
	Vibration	≤ 0.49g
	Others	Keep away from flammable or corrosive liquids
Power capacity		5KVA
Weight		750kg

Application



Welding of high voltage electric parts



Processing of auto parts



Manufacturing of auto spare parts



Welding of carriage plate



Beijing Essen Exhibition



Support of vocational education

Service *Sales & Services Network*

There are more than 40 sales service organizations of TIME in China, to provide first-class products and services. Perfect pre-sales, sales and after-sales service guarantee your benefits.



Sales service network of TIME welder in China



According to the service idea "Sincerity-based customer first" and the service tenet "All for customer satisfaction", with manual and automatic reply method, we will accept service consultation, complain, business and other services from customers through telephone, fax, E-mail, visit and letters and so on.

Trust comes from promises. The customer's service center will insist on the service rules that 100% acceptance, 100% handling, 100% reply and 100% satisfaction to increase the working quality and satisfaction of customers. Through customer service commissioner, setting special services, provide well service for dealer, agents, and common consumers. "First question duty system" can make sure after customer bring forward the service requirements through calling 400 660 9391, it will be replied within time limit, to realize the promises and one station service.

The customer service center can provide full and professional maintenance training free for customers. It will set maintenance training for customers regularly, and can also provide technical training according to the request.

Activities



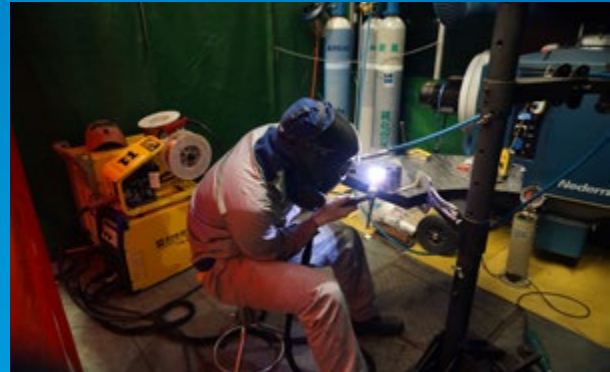
Visited Paton Electric Welding



Visited TWI



Essen Show in Germany



Worldskills China National Skills Competition



Beijing Essen Exhibition



TIME evening party



TIME welding robot show in exhibition



Automation Welding in Malaysia



SAW in Indonesia

<http://www.timewelder.com>



TIME GROUP INC.
Beijing TIME Technologies CO., Ltd.
Add: 17# Shangdi Kaituo Road, Haidian District, Beijing, 100085 China
Tel: 0086 10 62978011
Fax: 0086 10 62980814
Website:<http://www.timewelder.com>
E-mail: time-export@timegroup.com.cn